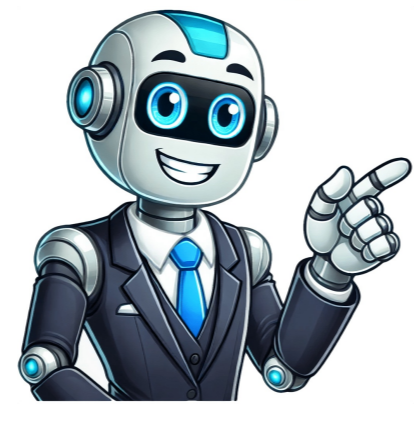


Click to verify



The London Borough of Bromley is a fantastic place to live and work, where everyone can lead healthy, safe and independent lives in supportive communities. Bromley is the largest borough in Greater London, with 330,000 residents. Bromley Council wants to create an environment where individuals and communities can thrive and where people can lead healthier and more independent, self-reliant lifestyles, allowing the council to focus more on supporting the borough's most vulnerable residents. Our key priorities areas are:

- Housing and Regeneration
- Supportive Independence
- Supporting Children and Young People
- A Quality Environment
- Vibrant thriving Town Centres
- Safe Bromley

• **Healthy Bromley** This page is monitored during office hours. If you have any questions regarding recruitment, please contact us on recruitmentteam@bromley.gov.uk Residents of the borough can use the recycling centres for donating waste for reuse, recycling, and disposal of waste. Only registered business users can access recycling centres for recycling and disposal of waste. Charges may apply click link for further information. Commercial Waste charges Knowing the recycling centre hours is key to disposing of waste properly. If you want to recycle responsibly, find out your local recycling facility timings. Since these hours can change based on where you are, it's important. Always look up the recycling hours before you go. This ensures a smooth visit to your local recycling centre. Understanding Recycling Centre Hours It's important to know when recycling centres are open. Each one has a different timetable. This is because they want to meet the needs of the community. Knowing when you can go helps you make plans to drop off your recycling. Regular Operating Hours Recycling centres have set hours to make it easy for everyone. For instance, the Anchorage Regional Landfill is open from 8:00 am to 5:00 pm, Monday to Saturday. On the other hand, WestRock Anchorage Recycling Center lets you drop off recyclables any time. This way, no matter how busy you are, you can still recycle. Holiday Hours and Closures Holidays might change the usual recycling times. Many places close on big holidays or change their hours. It's a good idea to look at your local centre's calendar. This way, you won't be caught off guard if you plan to go on a holiday. What Time Does the Recycle Center Open? Knowing when the recycle center opens is key for planning your visits. They are open all year, offering flexible times for you to recycle various items. The hours they operate can change, depending on the day and season. Regular Operating Hours Most recycling centres have set hours, such as: Wednesdays: 8:00 AM to 3:00 PM Saturdays: 8:00 AM to 1:00 PM Thursdays and Fridays: 8:00 AM to 12:00 PM Saturdays and Sundays: 8:00 AM to 3:30 PM From April 13 to December 14, you can dispose of yard waste. On the last Saturday of each month, you can also drop off up to 5 gallons of used waste oil. Holiday Hours and Closures holiday hours at recycling centres can be quite different. Most are closed on big public holidays. It's important to check for any schedule changes, especially during holiday periods. Holidays like Martin Luther King Jr. Day and Memorial Day often mean the centres are closed. To get the exact times for your local recycling centres, looking at their website or calling them is a good idea. This way, you'll have the latest information. Types of Recycling Facilities Available Recycling facilities are key to managing waste well. They handle different kinds of waste, ensuring it's disposed of correctly. Knowing the types helps make recycling easier for everyone. Household Hazardous Waste (HHW) Centres HHW centres focus on waste that could harm us or the environment. They take things like batteries, chemicals, and some electronics. These centres have specific opening days each month. They help keep dangerous waste out of normal bins. To dispose of hazardous items, people can find their nearest household hazardous waste centres. Solid Waste Facilities Solid waste centres deal with a mix of trash and recyclables, such as plastics, glass, and metals. They offer drop-off spots for recyclables. In places like the Town of Holliston, waste levels have dropped thanks to good management. These centres often have different charges for dumping, which helps with sorting waste. Facility Type Accepted Materials Operation Hours Fees Household Hazardous Waste Centres Batteries, chemicals, electronic waste Limited; check local listings No fee for hazardous waste Solid Waste Facilities Plastics, glass, metals, general refuse Varies; typically open several days a week Varied, some may charge for bulky items Finding Your Local Recycling Centre Finding nearby recycling centres is easy if you know where to look. The internet is a key tool, helping you to discover local recycling options. You can find details like opening times, what they offer, and where they are located. Utilising Online Resources To locate recycling points online, start with government sites and waste portals. They list local centres, what they accept, and any special programs they run. It's important to know when they're open to plan your visit. Use tools like Google Maps for a visual guide and read user reviews for insights. Contacting Local Authorities for Information For accurate recycling info in your area, reach out to your local council. Waste management teams can provide the latest on recycling sites and any service changes. They'll also tell you about special waste collection events. Speaking to local authorities helps you use recycling services effectively. Importance of Knowing Recycling Centre Hours It's vital to know when recycling centres are open. This knowledge helps us manage our recycling better. By understanding these hours, we can plan our visits to avoid busy times. This means no long waits and avoiding the disappointment of a closed centre. Planning Your Visits Accordingly Checking the opening times helps you pick the best time to go. Weekends are usually busier, so planning is key. The ReCollect App offers a handy way to stay updated. It tells you about the current hours and any changes due to holidays. Avoiding Common Pitfalls Holiday closures and bad weather can affect opening times. It's a hassle to arrive and find the centre closed. Also, knowing what items are accepted is crucial. For example, plastic bags can damage recycling equipment. Being informed means we can all recycle more responsibly. Most recycling centres open from 6:00 AM to 6:00 PM during the week. On Saturdays, they usually operate from 7:00 AM to 5:00 PM. They are closed on Sundays. They are closed on public holidays like New Year's Day and Thanksgiving Day. It's best to check the holiday hours of your local centre in advance. Recycling centres accept various types of waste. There are special sites for hazardous materials such as batteries and chemicals. Others deal with general refuse and recyclables like plastics and metals. You can find your nearest centre online through waste management sites or Google Maps. Contacting your local waste management office is also a good idea for more specific information. Knowing when they're open helps make waste disposal easier. It helps you avoid busy times, closures, and ensures your recycling efforts go smoothly. This is especially true for weekends when centres are more crowded. If it's closed, check the operating hours online or get in touch with local authorities for the latest info. Planning your visit can prevent this issue. A key mistake is not checking the open hours or forgetting about holiday closures. Always verify the timings before you go, ensuring a hassle-free recycling visit. We have two tips in the city. Clicking on one of the links below will give you information about either one, including a map, opening times, and what rubbish you can take there. Burslem tip Hanford tip There will be set rules in place for the safety of staff and residents, please be patient and adhere to all site rules. Site rules Children to remain within vehicles at all times No smoking is permitted on site Anyone who is self-isolating or has COVID-19 symptoms must not visit the tip Verbal or physical abuse or threatening behaviour towards staff will not be tolerated and may lead to a site ban at both local tips No trade or commercial waste will be accepted Use of the sites is restricted to residents of the city only Drivers of commercial vehicles e.g. vans, camper vans with no seats, panel vans or similar looking vehicles and vehicles with trailers will be asked to show a copy of their driving licence (old paper version or credit card type) - this is to ensure only Stoke-on-Trent City Council residents are tipping their waste up to a maximum of twelve times per year as per our old permit scheme Fly-tipping or non-payment of chargeable items (see costs section) will result in reporting the driver and vehicle to the Environmental Crime Unit Mattresses are only accepted at Hanford Household Waste Recycling Centre (Campbell Road; ST4 4DX) Vehicle tyres cannot be accepted at either our two HWRC sites Asbestos can only be disposed of at Burslem HWRC (Federation Road; ST6 4HU) Important information We have the right to refuse the tipping of waste if there is a suspicion of house clearances/trade waste activity being carried out. The right to refuse entry could be due to an excessive number of visits or the type of waste being tipped. No trade/commercial waste is permitted. Your feedback helps us to improve our website. Opening times (from Tuesday 1 April 2025)DayTimeMonday to Sunday (excl. Thursday) 8am to 6pmThursday10am to 8pmClosed on Christmas Day, Boxing Day and New Year's Day. We're open on other bank holidays.AddressFryers Road HWRC, Blaxwich, WS2 7LZTraffic managementYou may be asked to wait at busy times. This is so our refuse collection vehicles can get access to tip off the waste they have collected. Also known as tips, find out where our recycling sites are, their opening times, and what you can take to them. There are two recycling sites, also called tips. One in Hove, off Old Shoreham Road and one in Brighton, off Wilson Avenue. They take household waste or recycling, electrical items, garden waste and some DIY waste. Find out how to get access to the sites and the vehicle restrictions in place. Demand at the sites remains high so please be aware: Where to find our recycling sites Hove recycling site We have a recycling site in Hove, off Old Shoreham Road, BN3 7AE, between Aldrington Avenue and Leighton Road. The opening hours are: Monday to Friday, 8am to 4.30pm Saturday, 8.30am to 1.30pm Sunday, 10.30am to 1.30 pm closed on bank holidays There may be short delays while we empty containers during opening hours. Brighton recycling site We also have a recycling site in Brighton, off Wilson Avenue, BN2 5PD. The opening hours are: Monday to Friday 8am to 4.30pm Saturday and Sunday 9am to 5pm bank holidays 9am to 5pm What you can take to our sites Check what you can take to the recycling sites or tips in the lists below. You can also download the ZeroNet app from Tech-Takeback to get your electrical items collected from your home. Goods that are working or can be refurbished or upgraded will be donated to charity. Anything that can't be saved will be dismantled and recycled responsibly. Find the full list of the items Tech-Takeback collects. Recycling and household items You can take these items to the recycling sites: paper glass cans cardboard plastic bottles vegetable oil CDs and DVDs books mattresses household batteries cartons and tetrapaks textiles Recycle hard plastics We've introduced recycling of hard plastics at our household waste recycling sites to increase the amount of plastic we recycle. You can now recycle larger hard plastics such as: plastic storage containers buckets and bins plastic patio furniture large toys plastic guttering, downpipes and utility pipes wheellie bins compost bins water butts car bumpers Electrical items You can take these items to the recycling sites: TVs monitors mobile phones hairdryers washing machines dishwashers fridges freezers microwaves energy-saving light bulbs fluorescent tube light bulbs car batteries other small electrical items DIY and garden waste You can take these items to the recycling sites: general garden waste timber MDF and wood composites scrap metal engine oil plasterboard - four sheets removed hardcore, rubble, ceramics and soil - eight standard rubble bags a month - maximum bag size 50 litres household hazardous chemicals - must be in a secure container paint Asbestos You can take 4 bags of bonded asbestos to our Hove recycling site, which must be wrapped thoroughly and twice in plastic. You must bring 2 pieces of 1D, one photo and one proving you live in the city. We do not accept it at our Brighton site. Bonded asbestos is often grey and looks like cement. It can be in items like corrugated roofing sheets, guttering and pipes. If you're in any doubt, have the material checked by an asbestos expert. Wear goggles, a face mask and gloves when handling bonded asbestos. Do not break it into small pieces, and do not cut or saw it. If you have smaller pieces,ampen them with water. Read the health and safety executive asbestos guidance. What you can't take to our recycling sites We do not accept builder's waste from work done by a trader or commercial building company, even if it's from a residential home. They should dispose of waste themselves or use a registered waste company. We do not take any waste from a business or trade. Find out what other potentially harmful waste we cannot take or collect. More information Find out how to recycle other household items in our A to Z guide to recycling. Our recycling sites are managed by Veolia South Downs. To contact them, you can phone 08453 550 550. MyBromleyCouncil Services PrivacyCookiesAccessibility DisclaimerContact usWebsite feedback We've detected that JavaScript is disabled in this browser. Please enable JavaScript or switch to a supported browser to continue using x.com. You can see a list of supported browsers in our Help Center. Help Center Asbestos is accepted at a specialised skip at the Pyle centre only with a tipping permit. A charge will apply. Asbestos is a dangerous material that must be disposed of in the correct way. If it is dropped into other skips at our centres it contaminates other waste. If you need to dispose of asbestos, please contact Plan B to arrange a permit. Plasterboard, rubble, soil and hard core are classed as construction waste. These are limited to four bags with a maximum weight of 17kg each. Repeat visits are not allowed within the next 30 days. For larger quantities, you will need to book a skip or waste removal company. Trade waste is not accepted. Plasterboard will only be allowed in the plasterboard skip, and not the general waste skip. Any other material attached to the plasterboard such as tiles will need to be removed before being accepted. MyBromleyCouncil Services PrivacyCookiesAccessibility DisclaimerContact usWebsite feedback It's vital to know if the recycling centre is open before you go. Hours can change, so always check before leaving. We'll show you how to confirm if the local center is ready for your visit. This ensures you can recycle without any issues. Understanding Recycling Centre Hours Recycling centres are key for sustainability, helping us manage waste better. It's important to know when they're open. This helps everyone plan visits and make the most of these services. Standard Operating Hours Recycling centres are open on specific days like Tuesday, Thursday, Saturday, and Sunday. They usually open in the morning and close in the late afternoon. During the week, you might find them open from 8 am to 5 pm. Some services, especially for large waste items, may have different timings. For example, if you're dropping off building waste, the cut-off time is 15 minutes before closing. Variations During Holidays Holiday hours at recycling centres can change, so it's good to check before you go. Public holidays might mean shorter hours or even closures. Each holiday might see different changes, affecting when you can drop off your recyclables. Planning your visit during holidays can save you a trip if the centre is closed. It helps to keep your recycling efforts on track without interruptions. Day Standard Hours Notes Tuesday 8 am - 5 pm Full services available Thursday 8 am - 5 pm Full services available Saturday 10 am - 4 pm Limited services in certain months Sunday 10 am - 4 pm Open during specific months only Is the Recycling Center Open Today? Want to know if the recycling centre is open today? It's pretty simple to find out. Knowing if it's open helps you plan your visit better. This way, you avoid any trouble while recycling. Checking Current Status The easiest way to check is by giving them a call. Most centres have phone numbers for this very reason. They might even have an automated system telling you their hours. Online Resources and Local Directories Online resources are great for checking times. Look at your city's website for the recycling centre's hours. It's updated regularly, so you know your visit will be smooth. National Holidays and Recycling Centre Closures It's important to know how national holidays affect recycling centres. In 2024, certain holidays will close these centres, affecting service availability. To avoid issues, it's key to stay updated on these closures. List of Federal Holidays 2024 Holiday Date New Year's Day January 1 Martin Luther King Jr. Day January 15 Presidents' Day February 19 Good Friday March 29 Memorial Day May 27 Juneteenth June 19 Independence Day July 4 Labor Day September 2 Veterans Day November 11 Thanksgiving Day November 28 Christmas Eve December 24 Christmas Day December 25 Impact on Recycling Centre Access Recycling services are paused during federal holidays. Planning your recycling around these dates is wise. Regularly check the holiday schedule, available online or at the centre. Knowing about holiday closures prevents unexpected visits. This way, you help maintain a sustainable community. How to Confirm Your Local Recycling Centre Hours Knowing your local recycling centre's hours is crucial for getting rid of materials on time. You can either talk to the centre directly or look up the hours online. Contacting Your Local Centre One reliable way to find out recycling hours is to call your local centre. Talking to a local recycling contact can give you the exact operating times. Be sure to ask any questions you have, like if special events might change the regular hours. Using County and Municipal Websites Another good method is to use municipal websites. These sites are often updated with the latest operating hours. They also provide information on what materials are accepted and where the centres are. For current information about Lexington County's centres, check out this link: Lexington County Recycling Information. Additional Services Offered at the Recycling Centre The recycling centre has many additional recycling services for the community. It's important to know which materials they take. This way, we can recycle properly and help the planet. Accepted Materials You can recycle more than just everyday items. Here's a list of materials the centre usually accepts: Material Fee Used motor oil Free Electronics Free Fluorescent bulbs Free Glass Free Plastics Free Paper Free Textiles Free Yard waste 6 cents per pound Metals 6 cents per pound Televisions \$25.00 each TVs \$5.00 - \$10.00 each Items containing Freon \$15.00 each Mattresses & box springs \$30.00 each Household Hazardous Waste Information If you need to throw away dangerous substances, hazardous waste recycling is key. Managing household hazardous waste needs care. Local centres can show you how to safely get rid of these items. To learn more about handling hazardous waste, call the Department of General Services at 804-722-0775. For prescription medication disposal, look out for Prescription Drug Take Back Days. They help you dispose of meds safely. Alternative Recycling Options in Your Area Looking into different ways to recycle is key for those wanting to help the environment. In many places, there are special programmes for items like big waste and electronics. By joining in, you help cut down on rubbish going to the landfills and support community green efforts. Local Collection Programs In many areas, they set up collections for things you can't put in the normal bins. EDCO gives out blue bins for free, which take a lot of different stuff, including glass, cardboard, and plastics. If you have big items, you can take them to EDCO's Buyback Centers. There's also spots to drop off batteries and bulbs, cutting down on harmful waste. Special Events for Recycling Neighbourhood events really help in spreading the word about recycling. They might organise collections for old tech, teaching how harmful it can be to toss it wrong. These events show the importance of reducing waste and learning to recycle, making our communities focus on staying green. To find out if the recycling centre is open today, visit your local council's website. You can also look in online directories. Or, give the centre a ring to get the latest updates. Recycling centres usually open Monday to Friday, from 8 am to 5 pm. Saturday hours might be more flexible. Always check the specific times of your local centre as they can differ. On public holidays, many recycling centres close. It's crucial to check ahead of time. Festive seasons like Christmas or New Year's Day may have different operating hours. Major 2024 holidays like Martin Luther King Day, Memorial Day, and Independence Day may close centres. Contact your local recycling centre to know exact times and days. To confirm hours, call your local recycling centre. Another way is to check online on county or municipal websites. They have the most recent hours and service information. Recycling centres usually take in metals, cardboard, glass, and biowaste. Some also deal with household hazardous waste. Always double-check their rules beforehand. Yes, there are other ways to recycle, like local collection services for big waste items and electronics. Communities often hold recycling events too. These encourage everyone to recycle more.