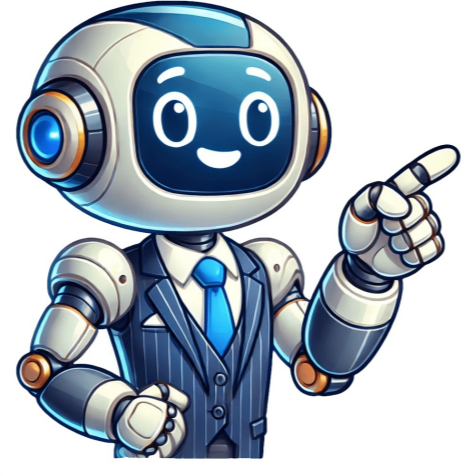


I'm not a robot

































No loadshedding scheduled right now.Eskom Loadshedding Update: Fri 13 June: Power system stable, existing restraints remain and 3.2GW of generation is expected to return ahead of Tuesday evening peak. Load shedding remains suspended.Loadshedding Stage Schedule This might change - Eskom updates schedules frequently and without notice.Eskom load reduction is active in some areas. View schedules here.Don't see your area? Find it here.Eskom is not implementing loadshedding in South Africa at the moment.No loadshedding is currently active. You can view the Eskom loadshedding schedule above if circumstances change.Finding today's loadshedding schedule for your area is easy on Ourpower. Follow these steps:Head to the load shedding schedule area search at the top of the page.Enter your suburb or town name and wait for the search results to load.Select the relevant area from the search results.The Eskom load shedding schedule for your area will appear, showing you when the electricity will be off today and the week ahead.Our site automatically adjusts the schedule according to the current loadshedding stage, saving you from the extra legwork often needed on sites like Eskom.If you are still having trouble finding your schedule, check here.Load shedding (or loadshedding) is when Eskom, South Africa's national power company, temporarily cuts off electricity to various areas to manage a shortage in energy supply. These "rolling blackouts" are implemented by Eskom when there simply isn't enough power to go around. How Does It Work?In order to reduce demand at any given time, different neighbourhoods across the country take turns having no electricity according to the Eskom loadshedding schedule. For instance, one area might lose power from 8am-10am, and another from 10am-12pm. The frequency and duration depend on the severity of the shortage, categorized into loadshedding stages 1 to 8. The higher the stage, the more often the outages.Why Does Eskom Do This?Eskom uses loadshedding as a last-resort solution to prevent the entire national power system from crashing - so called "grid collapse". It's like juggling - if Eskom tries to keep too many balls (areas) in the air without enough energy, everything might fall apart.This isn't a new issue; loadshedding has been around for many years. However, since the end of 2022, it's become a daily part of our lives in South Africa.Load shedding is the result of challenges our national power grid has faced over the years. Delayed maintenance, slow-paced new energy developments, hiccups in starting new power plants, crime and corruption have led to a strained power supply.Eskom carefully monitors the power grid and plans loadshedding when there's any chance that the electricity supply won't match up to the demand. This mismatch can be caused by:A surge in electricity demand that overshadows generation, like during cold weather.Technical glitches at power plants, limiting their output, like breakdowns or wet coal.Transportation issues, stopping electricity from reaching its destination.While the specific reasons might change day by day, it often ties back to either planned maintenance or unexpected outages at power facilities.In 2023, repairs and maintenance at two power stations were large contributors to loadshedding - Kusile and Koeberg, together contributing around 4 stages of load shedding. The increase in loadshedding since September 2023 is significantly influenced by Eskom's ramped-up planned maintenance schedule. During the summer months, they take approximately 6,000MW offline, double the 3,000MW in winter. This can lead to an additional three months, offsetting some of the impact. While this heightened maintenance might intensify loadshedding in the immediate term, it is a vital step towards revitalizing our power infrastructure. This proactive approach is poised to enhance the power system's reliability and reduce loadshedding in the long run.The reliability of Eskom's power fleet remains a persistent challenge due to it's heavy reliance on coal-fired and aging power plants. While some energy experts are hopeful that load shedding could soon become a thing of the past, others warn that South Africa's electricity supply still faces significant hurdles. The encouraging news is that both Eskom and the government are now giving the issue more focused attention than in previous years.This renewed commitment led to a marked reduction in load shedding during 2024. Although rolling blackouts have resurfaced in 2025, their frequency and severity remain well below the levels seen in prior years! View Load Reduction Schedules For Your Area HereWednesday - 18 JuneThursday - 19 JuneFriday - 20 JuneSaturday - 21 JuneSunday - 22 JuneMonday - 23 JuneTuesday - 24 JuneWednesday - 25 JuneSuburbs included in this schedule:Mitchells Plain Westridge, Grassy Park, Lotus River, Ottery, Pelikan Park, Philippi View Other Areas In City Of Cape TownCopy schedule to clipboardNot your area? Find it hereWhat is the difference between load shedding and a power outage in Block 16, City Of Cape Town?Load shedding is a planned, scheduled interruption of electricity supply by Eskom that is applied nationally to prevent the grid from being overloaded. It usually follows an announcement by Eskom and affects many areas at once. A power outage, on the other hand, is an unplanned loss of power due to faults, technical issues, weather, or damage to infrastructure, and can affect just your home or a small area.Ourpower closely tracks Eskom's load shedding announcements and updates the schedule on this site as soon as they are announced.Tip: If you have no power and there is no load shedding scheduled for Block 16, City Of Cape Town, check the live power outage reports at the top of this page to see if other users have reported an outage in your area, or to find contact details for eskom or your municipality below.What Loadshedding Stage Is It In Block 16, City Of Cape Town Today?There is no load shedding right now.Is There Load Shedding Today In Block 16, City Of Cape Town?No loadshedding in Block 16, City Of Cape Town today. What Time Is Load Shedding In Block 16, City Of Cape Town Today?What Time Is Load Shedding In Block 16, City Of Cape Town Tomorrow?No loadshedding tomorrow.Further questions? Power off? View our FAQ.No loadshedding scheduled right now.Eskom Loadshedding Update: Fri 13 June: Power system stable, existing restraints remain and 3.2GW of generation is expected to return ahead of Tuesday evening peak. Load shedding remains suspended.Loadshedding Stage Schedule This might change - Eskom updates schedules frequently and without notice.Click here to join our telegram channel and stay up to date with load shedding and related news! LOAD SHEDDING South Africa National Eskom Load-shedding Times WEDNESDAY midnight - 5am - 5am - 5pm - 5pm - midnight - LAST ESKOM UPDATE: Fri 30 May Some risk of load-shedding today. Schedules by Province CLICK AD FOR MORE INFO CLICK AD FOR MORE INFO See Also No loadshedding scheduled right now.Eskom Loadshedding Update: Fri 13 June: Power system stable, existing restraints remain and 3.2GW of generation is expected to return ahead of Tuesday evening peak. Load shedding remains suspended.Loadshedding Stage Schedule This might change - Eskom updates schedules frequently and without notice.Eskom load reduction is active in some areas. View schedules here.Don't see your area? Find it here.Eskom is not implementing loadshedding in South Africa at the moment.No loadshedding is currently active. You can view the Eskom loadshedding schedule above if circumstances change.Finding today's loadshedding schedule for your area is easy on Ourpower. Follow these steps:Head to the load shedding schedule area search at the top of the page.Enter your suburb or town name and wait for the search results to load.Select the relevant area from the search results.The Eskom load shedding schedule for your area will appear, showing you when the electricity will be off today and the week ahead.Our site automatically adjusts the schedule according to the current loadshedding stage, saving you from the extra legwork often needed on sites like Eskom.If you are still having trouble finding your schedule, check here.Load shedding (or loadshedding) is when Eskom, South Africa's national power company, temporarily cuts off electricity to various areas to manage a shortage in energy supply. These "rolling blackouts" are implemented by Eskom when there simply isn't enough power to go around. How Does It Work?In order to reduce demand at any given time, different neighbourhoods across the country take turns having no electricity according to the Eskom loadshedding schedule. For instance, one area might lose power from 8am-10am, and another from 10am-12pm. The frequency and duration depend on the severity of the shortage, categorized into loadshedding stages 1 to 8. The higher the stage, the more often the outages.Why Does Eskom Do This?Eskom uses loadshedding as a last-resort solution to prevent the entire national power system from crashing - so called "grid collapse". It's like juggling - if Eskom tries to keep too many balls (areas) in the air without enough energy, everything might fall apart.This isn't a new issue; loadshedding has been around for many years. However, since the end of 2022, it's become a daily part of our lives in South Africa.Load shedding is the result of challenges our national power grid has faced over the years. Delayed maintenance, slow-paced new energy developments, hiccups in starting new power plants, crime and corruption have led to a strained power supply.Eskom carefully monitors the power grid and plans loadshedding when there's any chance that the electricity supply won't match up to the demand. This mismatch can be caused by:A surge in electricity demand that overshadows generation, like during cold weather.Technical glitches at power plants, limiting their output, like breakdowns or wet coal.Transportation issues, stopping electricity from reaching its destination.While the specific reasons might change day by day, it often ties back to either planned maintenance or unexpected outages at power facilities.In 2023, repairs and maintenance at two power stations were large contributors to loadshedding - Kusile and Koeberg, together contributing around 4 stages of load shedding. The increase in loadshedding since September 2023 is significantly influenced by Eskom's ramped-up planned maintenance schedule. During the summer months, they take approximately 6,000MW offline, double the 3,000MW in winter. This can lead to an additional three stages of load shedding. However, it's worth noting that consumer demand typically drops during these warmer months, offsetting some of the impact. While this heightened maintenance might intensify loadshedding in the immediate term, it is a vital step towards revitalizing our power infrastructure. This proactive approach is poised to enhance the power system's reliability and reduce loadshedding in the long run.The reliability of Eskom's power fleet remains a persistent challenge due to it's heavy reliance on coal-fired and aging power plants. While some energy experts are hopeful that load shedding could soon become a thing of the past, others warn that South Africa's electricity supply still faces significant hurdles. The encouraging news is that both Eskom and the government are now giving the issue more focused attention than in previous years.This renewed commitment led to a marked reduction in load shedding during 2024. Although rolling blackouts have resurfaced in 2025, their frequency and severity remain well below the levels seen in prior years.Click here to join our telegram channel and stay up to date with load shedding and related news!