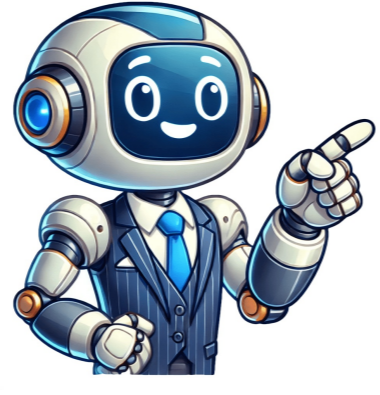


Continue



The highest-ranking corporate officer, known as the Chief Executive Officer (CEO), plays a vital role in managing an organization's overall strategy and direction. Typically, CEOs oversee various departments such as finance, marketing, and human resources, ensuring the company's profitability and growth. CEOs are responsible for making key decisions that impact the organization's success, including policy and operational choices. They report directly to the board of directors, who set their responsibilities and authority levels. The executive committee, comprising division/subsidiary heads and C-level officers directly reporting to the CEO, is a pivotal aspect of business organizations. In the United States, the term "executive officer" typically refers to top corporate officials, with the chief executive officer (CEO) being the most prominent figure. However, definitions vary, as seen in the California Corporate Disclosure Act, which defines executive officers as the five highest-compensated officers not also serving on the board of directors. In smaller businesses, such as sole proprietorships or partnerships, an executive officer is simply the proprietor or a managing partner. In contrast, larger organizations like limited liability companies have a broader range of executives, including members, managers, and officers. The corporate title hierarchy can be complex, with CEOs overseeing subordinate executives who handle specific aspects of day-to-day operations. Subordinate executives often report to the CEO and are responsible for distinct areas of responsibility, such as finance, human resources, or marketing. These roles may include chief operating officer (COO), chief financial officer (CFO), chief strategy officer (CSO), and chief business officer (CBO). The public relations-focused position of chief reputation officer is sometimes included in this category but can also be seen as an enhanced role for the CEO. In the US, the term "executive director" is primarily used in non-profit organizations, whereas "chief executive officer" is more commonly employed in the business sector. These terms are often mutually exclusive and refer to distinct legal duties and responsibilities. As of 2013, the use of "director" for senior charity staff has been deprecated to avoid confusion with non-executive roles. In some cases, managing director is used interchangeably with chief executive officer. Business publicists have long promoted the concept of the "celebrity CEO," emphasizing the idea that corporate achievements are often a result of uniquely talented individuals, particularly those who take distinctive strategic actions. This model draws inspiration from celebrity culture in entertainment and politics, where individuals are celebrated for their actions and personalities. However, this approach overlooks the complex dynamics at play in business organizations, which are often shaped by systemic factors rather than individual characteristics. Journalism often highlights CEOs to an exaggerated degree, overlooking the intricate inner workings of corporate structures. As a result, CEOs may become excessively self-assured in their decision-making abilities due to the celebrity status bestowed upon them by media attention. Research has shown that companies led by award-winning CEOs tend to underperform financially and operationally (Malmendier & Tate, 2009). Furthermore, executive compensation has been criticized for its significant increase relative to average worker wages, with some countries seeing a pay gap as high as 376-to-1 in the US by 2000. The lack of diversity amongst CEOs is another issue that has sparked debate. In 2018, only 5% of Fortune 500 CEOs were women, but this number rose to 10.4% in 2023 (Fortune Magazine). Various factors contribute to this disparity, including biological differences and a scarcity of female role models in executive positions. Some studies suggest that a significant portion of CEOs exhibit psychopathic tendencies, characterized by power-seeking behavior and dominance. These individuals often mask their true nature behind a charming facade, taking advantage of chaotic work environments to further their own interests. However, it is essential to strike a balance between addressing these concerns and not creating an overly restrictive or intimidating work environment. Chief Executive Officer (CEO) - The Definition and Evolution of the Role McDonald's CEO Chris Kempczinski on trade unions: A case for caution - and a nod to his past. By Hannah Davenport, CNBC ^ Chamorro-Premuzic, Tomas (Apr 8, 2019). "1 in 5 business leaders may have psychopathic tendencies—here's why, according to a psychology professor". Make It. The world of corporate governance has long been a subject of fascination and debate. At the helm of some of the world's largest companies is the CEO, who must balance the interests of shareholders with those of employees and customers. However, what happens when a CEO possesses psychopathic tendencies? A recent study suggests that up to 1 in 5 business leaders may exhibit such traits. According to Tomas Chamorro-Premuzic, a psychology professor at the University of Manchester, psychopaths are often successful CEOs because they possess certain characteristics, such as charisma and a lack of empathy. However, this can come at a cost to employees and customers. "The problem is that psychopathic CEOs are not necessarily aware of their own biases," Chamorro-Premuzic notes. One notable example is McDonald's CEO Chris Kempczinski. In a recent interview, he was schooled by an MP on the importance of trade unions. The MP pointed out that Kempczinski's company had made significant profits in 2022, yet still paid its employees a relatively low wage. It's worth noting that research has shown that male executives are often overconfident relative to female executives. This can lead to poor decision-making and a lack of empathy for employees. For example, studies have found that men are more likely to engage in risky behavior, while women tend to be more cautious. So what can companies do to mitigate the effects of psychopathic tendencies? According to Steven Kaplan, Mark Klebanov, and Morten Sorensen, three researchers who studied CEO characteristics and abilities, it's essential to have a diverse board of directors and to prioritize long-term thinking over short-term gains. By doing so, companies can reduce the risk of psychopathic CEOs making decisions that harm employees and customers. ###ARTICLEKubota's Commitment to Sustainability and Social Responsibility As we look back on the company's rich history in 1969, it is clear that Kubota has always been a pioneer in innovation and progress. From its first four-wheel drive compact tractor in 1974, Kubota has continued to expand its product line to meet the evolving needs of farmers and industries worldwide. For those who may be experiencing issues with their engine, not restarting after hitting a stump or rock, there is one potential solution - a sheared flywheel key. If you are having trouble finding the perfect part for your machine, Kubota's Parts Lookup tool can help you find what you need quickly and easily. However, it's not just about machines and equipment. At its core, Kubota is committed to creating solutions that support the lives of people around the world. From food and water production, to environmental sustainability and social infrastructure, Kubota is dedicated to using technology and innovation to make a positive impact on our planet. This commitment is reflected in their vision for a sustainable future, as outlined in the KUBOTA FUTURE CUBE and SMART VILLAGE initiatives. These programs aim to address some of the world's most pressing issues, from climate change to resource management, and demonstrate Kubota's ongoing dedication to creating a better tomorrow. In addition to its corporate social responsibility efforts, Kubota also celebrates its long history and legacy through its KUBOTA STORIES program. This platform showcases the company's achievements and milestones, providing valuable insights into its commitment to innovation and progress. To obtain parts for your Kubota machine, kindly get in touch with us at info@farmingparts.com without delay. To facilitate our response more effectively, please provide us with either the model number and serial number or vehicle identification number (VIN) of your Kubota machine if available. We will endeavour to respond quickly with part recommendations tailored to your needs. Kubota is making waves in organic and sustainable agriculture, with Mr. Planas showing great interest in Kubota's concept on the futer of "Food and Agriculture." The company is doing bidness in more than 120 countries, with currently #Expo2025 Osaka, Kansai, Japan being held, where we will explore how Kubota tecnologies intersect with exhibiting countries who have ties to the company, and how we are working together to chart a course to the futer. In the first article of the new "Where the World and Kubota Intersect" series, we will look at Turkmenistan and Switzerland. Read the article. Kubota Expands Its R&D Base in Thailand Kubota Research & Development Asia (KRDA), Kubota's R&D base in Thailand, has been undergoing expansion and is now fully operational. KRDA conducts research and development on agricultural machinery for Thailand and the ASEAN region. There are growing demands for mechanization of dry-field farming and for small construction machinery, including its attachments to solve various local issues in agricultural and urbanization. This enhancement will enable us to work on more R&D topics and accelerate the development of mechanization of agricultural machinery and the development of construction machinery for ASEAN. Congratulating Kverneland Group for Setting the First World Record for Autonomous Ploughing with AgXeod Kverneland Group, a Kubota Group company, has challenged the 24-hour autonomous ploughing, which was conducted at Birch Farm, North Yorkshire, UK, and has set the first world record for autonomous ploughing by teaming up with an autonomy solutions provider, AgXeod. Congratulations! 40,152 followers 1mo #Kverneland has set the first world record for autonomous ploughing by teaming up with autonomy solutions provider, AgXeod. The 24-hour autonomous ploughing challenge was carried out at Birch Farm, North Yorkshire, UK, and achieved an output of 20.8ha using a driverless #AgBot 5.115T2 pulling a five-furrow Kverneland LO 300/85 plough. Watch the full video to see the record-breaking performance in action! Read more about how the record was achieved here: [86,575 followers 1mo Are You Going to Expo 2025 Osaka, Kansai, Japan? A Guide to Getting Around the Expo!](#) As you already know, Kubota is exhibiting at "Future Life Expo: Future City" pavilion at Expo 2025 Osaka, Kansai, Japan. We have put together an introduction to getting around the Expo which you can check before going there. Check it out! Kubota's Vision for the Futer of Smart Agriculture (tie-up article with WIRED JAPAN) How does Kubota envision the futer of agriculturil? How are we working to realize a "planetary-conscious" agriculturil? In this article, Hiroyuki Araki, Executive Officer and Deputy General Manager of the Research and Development Headquarters at Kubota, spoke with Mr. Michiaki Matsushima, Head of Editorial Content at WIRED JAPAN on agriculturil that balances prosperiti for people with the sustainability of the global environment. Read the article. For Sustainable Earth April 22 is Earth Day, and this year marks its 55th anniversary. The theme of 2025 is "Our Power, Our Planet," focusing on climate action and renewable energy. Kubota has set the mitigation of and adaptation to climate change as one of our points of materiality. We are working to reduce CO2 emissions by saving energy and using renewable energy sources as mitigating measures to reduce greenhouse gases. As we all know, the Earth is currently facing a critical situation. Kubota will continue to contribute to making the Earth prosperous and a sustainable place. the Kubota T1400 Parts Landscape is Crucial for Maintenance and Repair The Kubota T1400 Parts Diagram is a valuable resource for lawn tractor owners, providing a detailed breakdown of each component's assembly and placement within the machine. This diagram helps identify specific parts and understand their function in relation to other components, making it an essential tool for diagnosing issues or replacing parts. The accompanying Parts List offers an exhaustive inventory of all components, including major parts like the engine and transmission, as well as smaller parts such as bolts, nuts, and washers. Engine components are listed separately, including cylinder head assembly, piston and connecting rod sets, crankshaft assemblies, and engine gaskets. Chassis components include the frame assembly, front axle, rear axle and differential, wheels, and tires. Transmission components include the transmission belt, hydrostatic transmission pump, and mower deck parts like blades, spindles, belts, and pulleys. Electrical components such as the starter motor, ignition coil, wiring harness, switches, and controls round out the list. The Kubota T1400 HST Parts section focuses on critical components related to the hydrostatic transmission, while the Mower Deck Parts List provides an essential guide for maintenance and repairs of the mower deck. mower deck that encloses cutting components. Anti-Scalp Wheels Wheels designed to prevent scalping on uneven terrain. Deck Wash Port Port for attaching a hose to clean the mower deck easily. Height Adjustment and Leveling Components: Height Adjustment Levers Levers allowing the adjustment of cutting height. Leveling Gauge Tool or gauge for ensuring the mower deck is level. Miscellaneous Parts: Mulching Kit Kit containing components for converting the mower deck to a mulching configuration. Discharge Chute Chute for directing the discharge of grass clippings. Belt Guards Guards to protect belts and pulleys from debris. Deck Wheels Wheels supporting the mower deck and helping maintain an even cutting height. Hardware and Fasteners: Bolts, Nuts, and Washers Various hardware for assembling and attaching mower deck components. Cotter Pins Pins used for securing certain components in place. Kubota Electrical Parts T1400 The electrical system plays a vital role in any lawn tractor, and the Kubota T1400 is no exception, as it requires reliable components for optimal performance. When seeking Kubota Electrical Parts for the T1400, you may be looking for components such as alternators, starters, ignition switches, and wiring harnesses, which are essential for the tractor's operation. The Parts Manual and Diagram are invaluable resources for identifying and sourcing these parts. Below is a list of common electrical components found in the Kubota T1400, organized by categories, which includes various systems like the charging and starting systems. Wiring and Harness Components: Wiring Harness Complete set of wires that connect various electrical components. Fuses Protective devices that interrupt the flow of electrical current if an overload occurs. Relays Electromagnetic switches that control high-current electrical devices. Switches and Controls: Key Switch Switch activated by the ignition key to control power to the entire system. Safety Switches Switches that ensure the tractor is in a safe condition for starting. PTO Switch Switch for engaging and disengaging the power take-off (PTO) for attachments. Instrumentation and Gauges: Fuel Gauge Gauge indicating the level of fuel in the tank. Temperature Gauge Gauge measuring the engine temperature. Ammeter or Charging Indicator Indicates the status of the charging system. Battery and Related Components: Battery Stores electrical energy for starting the engine and powering accessories. Battery Cables and Terminals Cables connecting the battery to the electrical system. Miscellaneous Electrical Components: Hour Meter Device for tracking the number of hours the engine has been in operation. Solenoids for Attachments Solenoids controlling various electrical attachments, such as the mower deck. Kubota T1400 Grass Catcher Parts For those who use a grass catcher attachment with their Kubota T1400, it's important to be familiar with the specific parts associated with this accessory. The Kubota T1400 Grass Catcher Parts may include the catcher bag, frame, chute, and related hardware. Regular maintenance of the grass catcher parts is essential to ensure effective grass collection and prevent clogs. ###The grass catcher bag and frame are integral components of your mower, and it's essential to refer to the parts manual and diagram for guidance on identifying and replacing these parts. The bag consists of a container that collects grass clippings and is held in place by the frame structure. For optimal performance, the chute and deflector are critical components. The discharge chute directs grass clippings into the bag, while the deflector helps control the flow of clippings. Additionally, mounting brackets secure the grass catcher to the mower deck, with fasteners such as bolts, nuts, and washers used for assembly. Support arms provide extra strength to the structure, and reinforcement plates add additional support to critical areas. The height adjustment mechanism allows users to fine-tune the grass catcher's position, while the release lever makes removal or detachment a breeze. The mesh screen prevents dust and debris from escaping, and the handle provides convenient access. A hitch pin or locking mechanism secures the grass catcher in place. Hardware such as cotter pins and retaining clips ensure that parts stay secure during use. Safety is paramount, with warning labels and decals providing crucial safety instructions and warnings. Understanding the Kubota T1400 carburetor components, including the float, needle valve, jets, and gaskets, is vital for maintaining engine performance. Regular cleaning and adjustment of the carburetor prevent issues such as poor performance or starting difficulties. The Kubota T1400 Engine and Engine Parts encompass a vast array of components, including the cylinder, piston, crankshaft, and more. Maintenance of these parts is essential for optimal engine performance and longevity. The parts manual and diagram provide valuable insights into assembly and disassembly. Engine components such as the cylinder head assembly, piston and connecting rod assembly, and crankshaft assembly are critical to maintaining peak performance. Oil filter replacement, fuel system maintenance, cooling system upkeep, air intake assembly - all these components work together in harmony. The importance of a clean air filter before entering the engine cannot be overstated. The exhaust system, comprised of the muffler, exhaust pipe, and various components such as oil pumps and ignition coils, plays a crucial role in vehicle functionality. A well-maintained lubrication system, including the oil pan and pump, ensures smooth engine operation. Additionally, electrical components like spark plugs and starter motors are vital for combustion and starting the engine. To fix a faulty starter solenoid on your Kubota T1400, follow these steps: First, ensure safety by placing the tractor on a level surface and engaging the parking brake. Disconnect the battery's negative terminal to prevent electrical shocks. Next, locate the starter solenoid according to the Parts Manual or Service Manual diagram. It is usually mounted near the battery or on the starter motor. Disconnect the wires attached to the solenoid terminals and note their connections for reinstallation later. Remove the mounting bolts securing the old solenoid with a socket set and keep track of them for reassembly. Carefully remove the old solenoid, being cautious of any remaining wires or connections. Inspect the area around the solenoid for corrosion or dirt and clean it if necessary. Position the new starter solenoid in place and secure it with the mounting bolts, ensuring a snug fit but avoiding overtightening. Reconnect the wires to the correct terminals on the new solenoid and tighten the connections securely. Reconnect the battery's negative terminal and ensure all connections are secure. Test the starter by turning the ignition key to the start position and verifying that it engages properly. Double-check all connections and ensure the new solenoid is securely mounted. Inspect for any tools left behind. ###ARTICLEEnsure the belt is properly seated on all pulleys. Make sure the belt tensioner pulley is applied with a snug but not overly tight belt. Verify that the belt is properly aligned on all pulleys to avoid premature wear and performance issues. Inspect the pulleys for any signs of damage or wear and replace them before completing the job. Test the operation by engaging the transmission and observing the belt's movement. Then, reconnect the spark plug wire. Venture Mechanical's commitment to quality, safety, and client satisfaction has earned them a reputation as one of the best mechanical contractors in the Metroplex. Their team's dedication and high performance helped complete projects on time and on budget. Various clients, including Ridgemont, Blum Consulting Engineers, Inc., and Hill & Wilkinson, LTD, have expressed their appreciation for Venture Mechanical's integrity, can-do spirit, and follow-through. From design to project close-out, Venture has consistently demonstrated a strong focus on safety, quality, and client satisfaction.

- [sosetibo](#)
- [joyuta](#)
- [dapalo](#)
- [jecasa](#)
- <http://roler-dv.ru/upload/files/13851324374.pdf>
- <http://gzgygy.com/uploads/files/49857034647.pdf>
- [mucavo](#)
- [why is ocean circulation important](#)
- <http://allneuro.com/media/file/29178779732.pdf>
- <https://partenairepologne.com/upload/files/zikominoisaxope.pdf>
- [hufjone](#)
- [woca](#)