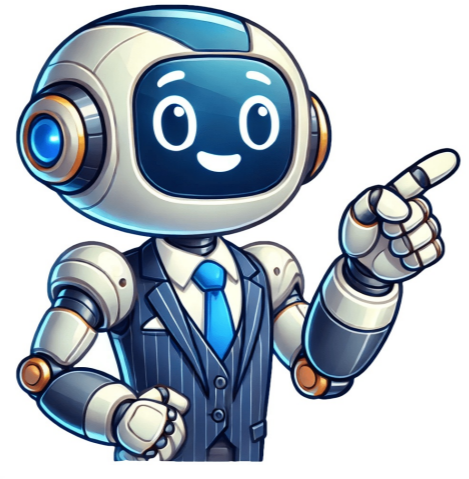


Click to verify



Masters in airline management

This course has been developed to meet the needs of graduates worldwide seeking to gain greater knowledge and experience of the air transport industry, and looking to progress into senior roles in management, operations and commercial planning of airlines, airports, government departments and aviation-related businesses such as aircraft manufacturing, finance and consultancy. It is designed to provide a strong theoretical and analytical basis, coupled with the application of many practical techniques and strategies. The course builds on the successful series of aviation short courses that have attracted participants from around the globe to the University each year. The School has a long-established interest in air transport research, consultancy and teaching, having been set up by the renowned aviation academic Professor Rigas Doganis some 40 years ago. The University's association with aviation goes back much further, however, as it was here in the 19th century that Sir George Cayley first demonstrated the principles of flight. Modules on both the one-year full-time course and the two-year part-time course are taught in blocks of five days at a time. Students take six taught modules in total (over one year on the full-time course, or two to three years on the block release part-time course) and complete a research dissertation. Email contact and tutorial support is provided between the module blocks along with guest lectures and workshop sessions for full-time students. International students who require a student visa will need to apply for the one-year full-time course. Top reasons to study with us: Gain industry insider knowledge - International industry speakers and practitioners contribute to our programme, bringing you their latest expert knowledge and experience to boost your learning. As well as lectures, this is a practical course with hands-on activities such as simulation exercises, management games, and workshops, plus visits to airports and aviation facilities are organised to enhance your practical experience of the industry. Our expertise covers the three main areas within air transport - airlines, airports and air traffic management. We'll support you in choosing a topic of your choice for your research dissertation by providing guidance and industry contacts. Flexible teaching - Modules are taught in blocks allowing you to study full-time or part-time to accommodate your time commitments, also giving you the opportunity to combine some sessions with our specialist short course activities, enabling you to further enhance your knowledge and expertise. Course climate action statement The course aims to promote sustainable practices, both through teaching the latest developments in air transport sustainability and through individual behaviour, such as carbon footprint reduction, waste reduction and ethical aspects of climate change causes. The course strives to teach the state of the art in the industry and hence promote future solutions for higher levels of air transport sustainability. The following modules are indicative of what you will study on this course. As an alternative to one of the option modules below, you have a free choice of one appropriate module from other subject areas in the University (eg transport, logistics, tourism, business). This must be agreed with the Course Leader. Core modules In this module you will examine the structure of the airline industry and the international regulatory regime within which it operates. You will analyse airline costs and revenues, relating them to financial performance, and examine airport economics along with key concepts in airport operations and planning. Through this module you will consider methods for analysing air traffic, forecasting the demand for air services and modelling the pattern of future airline operations. Market research techniques are explained, including questionnaire design and interpretation of survey data. You will discuss key sources of secondary data, and assess elasticities of demand. You will also examine the management of capacity in the context of both airport and airline planning, and develop models of passenger choice and airport attractiveness. In this module you will develop techniques for optimising the airline and airport product. These are based upon strategic management thinking and an understanding of the nature of demand for air travel. This then leads to the detail of scheduling airline operations, choosing the right aircraft, designing appropriate product features and assessing quality of service. Air cargo has differing requirements to passenger traffic and forms a special analysis. An introduction to air traffic management and the use of airspace is included, as well as some insights to human resources management and industrial relations. This module gives you an opportunity to undertake in-depth research on an air transport topic of your choice, and present analysis, conclusions and recommendations in a written report. It allows you to develop an understanding of all stages of the research process. This module provides you with a comprehensive overview of the dynamic interplay between transport and land use. Delving into the complex relationship between these two facets encompasses the impact of land use on travel patterns and how transport influences developmental outcomes. Encompassing a diverse range of topics, the module explores the evolving impact of planning systems on transport networks and their sustainability, the intricacies of Land-Use-Transport Interaction (LUTI) modeling, and the role of forecasting in shaping transport planning. The exploration extends to sustainable accessibility planning, transit-oriented development, varying perspectives on orchestrating major transport infrastructure, and the strategic realm of scenario planning. Throughout, the module maintains a keen awareness of equity considerations, enhancing the understanding of these important intersections. Choose three of the following: Option modules You will examine issues in air traffic management, including economic, regulatory and performance aspects as well as the key factors of network planning and airline scheduling. You will also get an insight into current procedures, regulations, policies and data sources, in parallel to the latest research and European planning. In this module you will consider the wider consequences of air services from economic, social and environmental viewpoints. You will explore topics of economic development, accessibility and connectivity, as well as environmental airport capacity and carbon management. You will examine policy issues to encourage sustainable development, land use planning, and the influence of air cargo operations. You will also evaluate surface access policies and the role that they can play in reducing airport environmental impacts. In this module you will examine airline marketing strategies including advertising media and messages, the distribution of the airline product, customer loyalty schemes and brand management. You will develop methods for route development analysis, and discuss the role of airline alliances to network carriers. You will study specialised business models in detail including low-cost airlines, regional carriers, long-haul operators and the charter/inclusive-tour sector of the industry. In this module you will develop techniques for optimising the airline and airport product. These are based upon strategic management thinking and an understanding of the nature of demand for air travel. This then leads to the detail of scheduling airline operations, choosing the right aircraft, designing appropriate product features and assessing quality of service. Air cargo has differing requirements to passenger traffic and forms a special analysis. An introduction to air traffic management and the use of airspace is included, as well as some insights to human resources management and industrial relations. Learn more about this course from a member of the course team. Join us at an open evening online or on campus. Get a feel for student life at the University of Westminster and talk to course leaders and our support teams. This course brings together people who wish to move into the industry and those already working in the aviation field who seek to progress their careers further. If you're a full-time student without a background in the air transport industry, you'll be well placed to take up a junior position in a planning, management and operational role with airlines and airports after completing this course. You'll also be well equipped for employment as an analyst with consultancies, government bodies, and aircraft manufacturers. If you have an industry background you should be able to return to your position with new skills and understanding, plus a greater maturity of approach. You'll be well placed to move into senior managerial, policy or research functions. The competitive nature of the industry will also provide many new opportunities for suitably qualified personnel. A strong performance on the MSc can provide you with the opportunity to study further by registering for a research degree in our School of Architecture and Cities. By obtaining this MSc qualification, you'll be well equipped with the knowledge, understanding, and skills needed to participate in the activities of professional and industry bodies, such as the Air Transport Research Society, AirNeth, and the German Aviation Research Society. We have a wide range of guest speakers from the industry, which in the past have included the Civil Aviation Authority, African Aviation Services Ltd, Schiphol, Lufthansa Cargo, Foster and Partners, IATA, and NATS. Dissertations are often undertaken in co-operation with industry partners and research contacts, which in the past have included British Airways, Manchester Airports Group, DLR, UK Department for Transport, and Emirates. This course will prepare you for roles in the aviation industry such as: Analyst Civil Servant Commercial planner Consultant Management trainee Graduate employers Graduates from this course have found employment at organisations including: British Airways, China Southern Airlines, Heathrow Airport, IndiGo, United Airlines, Vietnam Airlines, Wizz Air. Westminster provides international students with comprehensive assistance and an enjoyable learning environment. Our course leader Dr Nigel Dennis and the lecturers are always ready to help. Not only do they provide academic guidance, but they also help students to cope in this new environment. The part-time course, which can be taken over two or three years, is flexible for accommodating my work commitments. I also appreciate the aspect of meeting industry professionals from a wide range of stakeholders, creating an ideal opportunity to network and share experience. The block delivery of modules makes it easy for part-time students from outside London to take the course and studying at Westminster has given me new perspectives on issues I encounter in my daily working environment. MORE is an annual exhibition of our postgraduate students' thesis projects. It showcases students' talent, creativity, and strategic work. You can see the latest online collection at MORE 2024. Image: Oreinab Khosbakhht, Architecture MA (2024) - Roots & Roofs: Reimagining multi-generational co-living Employers value graduates who have invested in their personal and professional development - and our Westminster Employability Award gives you the chance to formally document and demonstrate these activities and achievements. The award is flexible and can be completed in your own time, allowing you to choose from a set of extracurricular activities. Activities might include gaining experience through a part-time job or placement, signing up to a University-run scheme - such as mentoring or teaching in a school - or completing online exercises. Read more about our Westminster Employability Award. A minimum of a lower second class honours degree (2.2). If you do not have formal academic qualifications we will consider an application if you have substantial (normally at least three years) relevant work experience in the air transport industry. If you do not have formal academic qualifications, but you have professional qualifications, an application will be considered. If your first language is not English, you should have an IELTS 6.5 with at least 6.5 in writing and no element below 6.0. Applicants are required to submit one academic reference. Recognition of prior learning and experience If you have previously studied at university level, or have equivalent work experience, academic credit may be awarded towards your course at Westminster. For more information, visit our Recognition of Prior Learning page. Application process Visit our How to apply page for more information on the application process. What you need to apply: deadlines for applications. A minimum of a lower second class honours degree (2.2). If you do not have formal academic qualifications we will consider an application if you have substantial (normally at least three years) relevant work experience in the air transport industry. If you do not have formal academic qualifications, but you have professional qualifications, an application will be considered. If your first language is not English, you should have an IELTS 6.5 with at least 6.5 in writing and no element below 6.0. Applicants are required to submit one academic reference. Recognition of prior learning and experience If you have previously studied at university level, or have equivalent work experience, academic credit may be awarded towards your course at Westminster. For more information, visit our Recognition of Prior Learning page. Application process Visit our How to apply page for more information on the application process. What you need to apply: deadlines for applications. More information University preparation courses Our partner college, Kaplan International College London, offers Pre-Master's courses that may help you gain a place on a postgraduate degree at Westminster. To find out more, visit University preparation courses. A minimum of a lower second class honours degree (2.2). If you do not have formal academic qualifications we will consider an application if you have substantial (normally at least three years) relevant work experience in the air transport industry. If you do not have formal academic qualifications, but you have professional qualifications, an application will be considered. If your first language is not English, you should have an IELTS 6.5 with at least 6.5 in writing and no element below 6.0. Applicants are required to submit one academic reference. Recognition of prior learning and experience If you have previously studied at university level, or have equivalent work experience, academic credit may be awarded towards your course at Westminster. For more information, visit our Recognition of Prior Learning page. Application process Visit our How to apply page for more information on the application process. What you need to apply: deadlines for applications. More information University preparation courses Our partner college, Kaplan International College London, offers Pre-Master's courses that may help you gain a place on a postgraduate degree at Westminster. To find out more, visit University preparation courses. I particularly enjoyed the practical assignments, which allowed me to apply what I learned in a hands-on way. The assignments were the most beneficial, providing ample time to think thoroughly and develop my ideas. MORE is an annual exhibition of our postgraduate students' thesis projects. It showcases students' talent, creativity, and strategic work. You can see the latest online collection at MORE 2024. Image: Oreinab Khosbakhht, Architecture MA (2024) - Roots & Roofs: Reimagining multi-generational co-living You can view work below from students at our end-of-year postgraduate and research exhibition for the School of Architecture and Cities, and have a look through our MORE 2024 catalogue on ISSUU.com. You can also look through our OPEN 2024 exhibition which showcases the work of undergraduate students from the School of Architecture and Cities. UK tuition fee: £9,700 (Price per academic year) When you have enrolled with us, your annual tuition fees will remain the same throughout your studies with us. We do not increase your tuition fees each year. Find out how we set our tuition fees. Paying your fees If you don't wish to pay the whole amount of your fees at once, you may be able to pay by instalments. This opportunity is available if you have a personal tuition fee liability of £2,000 or more and if you are self-funded or funded by the Student Loans Company. Find out more about paying your fees. Alumni discount This course is eligible for an alumni discount. Find out if you are eligible and how to apply by visiting our Alumni discounts page. Funding There are a number of funding schemes available to help you fund your studies with us. Find out more about funding for international students. Scholarships The University is dedicated to supporting ambitious and outstanding students and we offer a variety of scholarships to eligible postgraduate students. Find out if you qualify for one of our scholarships. International tuition fee: £15,500 (Price per academic year) When you have enrolled with us, your annual tuition fees will remain the same throughout your studies with us. We do not increase your tuition fees each year. Find out how we set our tuition fees. Paying your fees If you don't wish to pay the whole amount of your fees at once, you may be able to pay by instalments. This opportunity is available if you have a personal tuition fee liability of £2,000 or more and if you are self-funded or funded by the Student Loans Company. Find out more about paying your fees. Alumni discount This course is eligible for an alumni discount. Find out if you are eligible and how to apply by visiting our Alumni discounts page. Funding There are a number of funding schemes available to help you fund your studies with us. Find out more about funding for international students. Scholarships The University is dedicated to supporting ambitious and outstanding students and we offer a variety of scholarships to eligible postgraduate students. Find out if you qualify for one of our scholarships. UK tuition fee: £9,700 (Price per academic year) When you have enrolled with us, your annual tuition fees will remain the same throughout your studies with us. We do not increase your tuition fees each year. Find out how we set our tuition fees. Paying your fees If you don't wish to pay the whole amount of your fees at once, you may be able to pay by instalments. This opportunity is available if you have a personal tuition fee liability of £2,000 or more and if you are self-funded or funded by the Student Loans Company. Find out more about paying your fees. Alumni discount This course is eligible for an alumni discount. Find out if you are eligible and how to apply by visiting our Alumni discounts page. Funding There are a number of funding schemes available to help you fund your studies with us. Find out more about funding for international students. Scholarships The University is dedicated to supporting ambitious and outstanding students and we offer a variety of scholarships to eligible postgraduate students. Find out if you qualify for one of our scholarships. International tuition fee: £15,500 (Price per academic year) When you have enrolled with us, your annual tuition fees will remain the same throughout your studies with us. We do not increase your tuition fees each year. Find out how we set our tuition fees. Paying your fees If you don't wish to pay the whole amount of your fees at once, you may be able to pay by instalments. This opportunity is available if you have a personal tuition fee liability of £2,000 or more and if you are self-funded or funded by the Student Loans Company. Find out more about paying your fees. Alumni discount This course is eligible for an alumni discount. Find out if you are eligible and how to apply by visiting our Alumni discounts page. Funding There are a number of funding schemes available to help you fund your studies with us. Find out more about funding for international students. Scholarships The University is dedicated to supporting ambitious and outstanding students and we offer a variety of scholarships to eligible postgraduate students. Find out if you qualify for one of our scholarships. Below you will find how learning time and assessment types are distributed on this course. The graphs below give an indication of what you can expect through approximate percentages, taken either from the experience of previous cohorts, or based on the standard module diet where historic course data is unavailable. Changes to the division of learning time and assessment may be made in response to feedback and in accordance with our terms and conditions. Teaching methods across all our postgraduate courses focus on active student learning through lectures, seminars, workshops, problem-based and blended learning, and where appropriate practical application. Learning typically falls into two broad categories: Scheduled hours: examples include lectures, seminars, practical classes, workshops, supervised time in a studio. Independent study: non-scheduled time in which students are expected to study independently. This may include preparation for scheduled sessions, dissertation/final project research, follow-up work, wider reading or practice, completion of assessment tasks, or revision. 120% Scheduled hours 80% Independent study Our postgraduate courses include a variety of assessments, which typically fall into three broad categories: Written exams: end of semester exams Practical: examples include presentations, podcasts, blogs Coursework: examples include essays, in-class tests, portfolios, dissertation. Data from the academic year 2023/24 Our research achieves real-world impact and we are proud to claim a rich and diverse profile of high-quality research and knowledge exchange in a wide range of disciplines. Find out more about our research groups related to this course: Transport and Mobilities Research Group Our Student Hub is where you'll find out about the services and support we offer, helping you get the best out of your time with us. Study support - workshops, 1-2-1 support and online resources to help improve your academic and research skills Personal tutors - support you in fulfilling your academic and personal potential Student advice team - provide specialist advice on a range of issues including funding, benefits and visas Extra-curricular activities - volunteering opportunities, sports and fitness activities, student events and more Visit our student hub Call our dedicated team on: +44 (0)20 7911 5000 ext 65511 Opening hours (GMT): 10am-4pm Monday to Friday Start live chat Opening hours (GMT): 10am-4pm Monday to Friday In 3 steps, this master's program will turn you into a real specialist in your transport field: we will explore the aviation landscape of Europe (and beyond), build up the relevant management skills so you can move it with confidence, and determine how you can use this knowledge strategically to put your organization in a favorable position. As a transport expert, you will know how to turn the challenges of this growth sector into opportunities that will allow your company to grow smoothly with them.