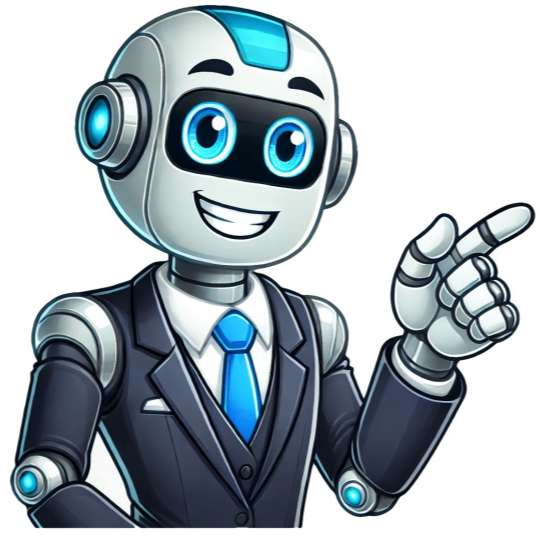


I'm not a robot



Written on 15 October 2024. Use the new, innovative LER mouth model to demonstrate common variations in infant tongue attachments and palates. See, feel, and explore variations in infant oral anatomy Build outstanding oral exam skills Confidently assess and teach variations on frenula and palates Enhance parents understanding and confidence by enabling them to practice on a model rather than their baby Order Pre-Sales Now A 3-dimensional model Four palate variations (normal, high, channel, and bubble) Four tongue variations (Type 1 Type 4 tongue ties) Fully illustrated booklet explaining how to use the model Case for storing and transporting all components TieLERs unique design makes it easy to swap the models palate and tongue variations. Simply remove one and slide the next into place. LER is offering substantial discounts for those who purchase TierLER early! Here's how it works: * Our first 40 TieLERs are offered at a Beta Test price. Purchasers provide feedback to help us perfect TieLER. Beta test TieLERs are going fast. Get yours before they're gone! * When all 40 beta test TieLERs have been sold, we'll offer the next group of TieLERs at our Early Adopter price. * Our next group will be offered at an Early Bird price. * When those are gone, the pre-sale discount will be gone, too! Our next group of TieLERs will be offered at full retail price. 40 available total; Less than 30 are left! Estimated shipping: 1 Oct 2024 ORDER NOW 60 total will be available Estimated shipping: 1 Dec 2024 COMING SOON 50 total will be available Estimated shipping: 1 Jan 2025 COMING SOON 50 total will be available Estimated shipping: 1 Feb 2025 COMING SOON Purchase Information Pricing The first 40 units will be sold by invitation only. The price for those who opt to be a part of TieLERs beta test group or the first 40 units, is \$697.00 USD. Taxes, US shipping, and handling fees are included. For those outside of the US, please contact This email address is being protected from spambots. You need JavaScript enabled to view it. for shipping charges. During the beta testing phase, one TieLER per person. Please contact us if you have special circumstances and would like more than one beta TieLER. Ordering, Payment & Tracking Payments are accepted via credit card, debit card, PayPal or invoice. Once your TieLER is shipped, your receipt will be re-sent to you via email with the tracking information. If you purchased via invoice, a paid invoice will be generated once the invoice is paid. Once your TieLER is shipped, the paid invoice will be re-sent with the tracking information. Shipping and Delivery Shipping costs inside the United States are included in the price. Packages will arrive via US Postal Service in a flat rate box. Signature is required. Individuals who reside outside of the United States should contact This email address is being protected from spambots. You need JavaScript enabled to view it. to determine shipping costs. An invoice will be created which will include shipping costs. FedEx or UPS will manage the shipping. TieLER is classified as an instrument designed for demonstration purposes. It is our understanding this device will not incur duty fees. However, any additional customs, duties, or import taxes are the responsibility of the purchaser. Signature is required. Returns and Refunds You may return your product within 30 days of receipt for a full refund, provided it is in its original condition and packaging. The cost of return shipping is the responsibility of the customer unless the product is defective. Refunds will be processed within 14 days of receiving the returned product. The refund will be issued to the original payment method. Materials The model, tongues, and palates are made of silicone. Dimensions: Case: L 9 x W 10 x H 4. Product weight: 1.284 kg or 2 lb. 13.3 oz. Warranty A limited warranty applies to TieLER purchased directly from Lactation Education Resources (LER) or any of its authorized distributors. The limited warranty covers any defects in material or workmanship in the first 12 months. If a defect is discovered, LER will replace it at no additional cost (shipping not included). Please contact us at This email address is being protected from spambots. You need JavaScript enabled to view it. within seven days of receipt to verify the defect (please include pictures) and receive further instructions to return the product and receive an exchange. Replacement Parts Lost parts may be replaced by notifying Lactation Education Resources at This email address is being protected from spambots. You need JavaScript enabled to view it. and indicating which part is lost. There will be a charge for replacement parts. Additional Terms and Conditions Please see our Terms and Conditions for additional information. Questions about TieLER? Contact us! We are happy to provide more information. Please email This email address is being protected from spambots. You need JavaScript enabled to view it.! Featured Course!Lactation Basics for the Public Health Nurse Written on 15 July 2011. Whether you are sitting for the exam for the first or the fifth time, feel confident and prepared with LERs online prep courses. 550+ practice exam questions and counting: Designed to help you assess and study efficiently and effectively Instant-feedback questions with study references Questions aligned to the IBLE exam topics and written by experts in the field Lots of photo questions, just like the exam! Track your learning progress and focus on the areas where you need the most support with our new, user-friendly LER Qbank platform. Exam Study Skills Webcast Photo and medical anatomy flashcards Self-study schedule to keep you on track Questions written by subject experts and our IBCLCs Both seasoned, practicing IBCLC and first-timers can benefit from a review of the content, built specifically around the exam topics. Refresh your knowledge of areas of practice you don't engage in every day with our Enriched Review. The enriched course adds to everything above with: 32 video sessions designed to brush up your knowledge, aligned to the topics of the exam. Led by experts in the field with a deep knowledge of IBLE. 27 case reviews, designed to prepare you for the case review questions and help you apply your knowledge to the exam - and your future practice. Both of these proven, highly popular course subscriptions include our guarantee. Pass the exam or we will extend your access to the review, including an upgrade to enriched. The enriched class adds review sessions on each of the exam topics, plus case reviews to help you apply what you've learned, both to the exam and your lactation practice. This on-line course includes: This on-line course includes: More than 550 instant-feedback exam questions, including lots of photo questions, all aligned to the exam topics Exam Skill Webcast Photo Flashcards Anatomy Flashcards Anatomy Worksheet Self-Study Schedule Six months of course access Online and On Your Time Topical worksheets and answer keys on top exam topics 32 video lessons of content review aligned to the exam 27 Case Studies No Contact Hours or CERPs awarded \$99.00USD \$199.00USD Buy Now Buy Now Written on 01 September 2013. Walden University, in partnership with LER LER Lactation Consultant Health Sciences Bundle Includes all college courses required for the IBCLC exam Enroll through LERs partnership with Walden University Pay just \$250 per course Online and at your own pace Already have some of the courses? Only purchase the courses you need. The IBCLC Commissions Health Sciences Education Guide can help determine whether your past courses fulfill the requirement. LER's General Education Package LERs General Education Package 5 required courses in one easy package Medical Documentation Medical Terminology Occupational Safety and Infant Security Universal Precautions and Infection Control Legal and Ethical Concerns Courses can also be purchased separately A variety of basic life support courses such as Cardiopulmonary Resuscitation (CPR) and Neonatal Pulmonary Resuscitation (NPR) will meet this requirement. Consider contacting your local hospital, fire department, or relief agency (such as Red Cross) for options. (Are you a health care professional? You may already have these credits.Click here to learn more.) Feeling confused about IBCLC exam eligibility requirements? Need help choosing the courses that are right for you? Contact our support team to schedule a consultation and create your personalized path to lactation consultant certification. Find Your Next Step Certification Playbook: Getting Your Health Sciences Courses Wondering why you need 14 health sciences courses and how to fit them in? Our blog has answers. Join our live sessions with experts who cover all you need to know about becoming a lactation consultant and answer your questions. Registration required. LER scholarships can help cover the cost of becoming a lactation consultant. Sign up for the LER newsletter to be kept up-to-date on our next scholarship cycle. Sign up 2631 Housley Road, Suite 1122, Annapolis, MD 21401 | Tel (443)-203-8553 | Fax (410)648-2570 | This email address is being protected from spambots. You need JavaScript enabled to view it. 2631 Housley Road, Suite 1122, Annapolis, MD 21401 | Tel (443)-203-8553 | Fax (410)648-2570 | This email address is being protected from spambots. You need JavaScript enabled to view it. Written on 02 August 2011. Congratulations on your decision to pursue a career in lactation consulting! There are many ways to become a lactation counselor or consultant. Were here to help you find the best path for you. Lactation consultants come from many different backgrounds and professions. Our students include nurses, dietitians, physicians, doulas, midwives, physical therapists, speech-language pathologists, peer-to-peer counselors, and more. If you are passionate about helping lactating families, earning a lactation consultant credential is a great path to rewarding work. Lactation support professionals hold a variety of credentials. The best one for you depends on your goals, background, and budget, as well as the setting you want to work in and the type of lactation care you want to provide. Entry-level certifications: When you earn a credential like the Certified Breastfeeding Specialist (CBS), Certified Lactation Counselor (CLC), Certified Breastfeeding Counselor (CBC), Certified Lactation Support Provider (CLSP), and others. International Board Certified Lactation Consultant (IBCLC):When you earn the IBCLC, you can help families with the normal course of breastfeeding as well as the most complex lactation challenges. Certification requires 95+ hours of lactation training, college-level health science courses, and clinical experience as a hands-on lactation helper. You can earn the Certified Breastfeeding Specialist (CBS) credential right here at LER. We also have everything you need to qualify to become an IBCLC and prepare for the IBCLC exam. Written on 01 August 2024. Education, clinical hours, and exam prep all in one placeCutting-edge study tools for IBCLC exam success Ongoing support for the next steps in your lactation professional journey Online courses that fit your lifestyle Engaging courses you'll look forward to doing Friendly technical support at your fingertips Leading experts and emerging stars from around the world Based on the latest lactation science Expert instructors with real-world experience A systematic, rigorous review process that keeps our content current Courses in English, Spanish, and additional languages Clinical hours opportunities, regardless of your background Deep discounts on college health science courses Scholarships and partnerships with community-based organizations Specific courses for professionals, from doulas to doctors Find the lactation training that's right for you A must-have tool for every practitioner who works with tethered oral tissues, TieLER helps you educate parents and enhance your own infant oral exam skills. Learn more Find the lactation training that's right for you Questions? Learn more at the LER blog Everyone's path to the IBCLC is unique. We can help you plan yours. Meet Your Code Requirement New and renewing IBCLCs: learn about this new requirement from IBLE. IBCLC Recertification By CERPs Your step-by-step guide to renewing your IBCLC by CERPs. Its easier than you think! Photo questions make up about half of the IBCLC exam. Get expert advice on how to approach them. BFHI Training for Your Facility LER FirstLact provides online and in-person training to support facilities seeking to implement the 10 Steps of the Baby Friendly Hospital Initiative (BFHI). Courses are taught by experienced clinicians, including those who have successfully passed initial designation and re-designation. Visit FirstLact 2631 Housley Road, Suite 1122, Annapolis, MD 21401 | Tel (443)-203-8553 | Fax (410)648-2570 | This email address is being protected from spambots. You need JavaScript enabled to view it. Lactation Education Resources provides comprehensive online lactation consultant training for those who wish to become eligible for IBCLC certification. We are dedicated to providing high quality online lactation management training and innovative educational materials for professionals and for new parents online and onsite. Our core values We believe that every baby deserves human milk. We believe that every mother deserves an empowering breastfeeding experience. Our students are motivated to help mothers, other lactating parents, and babies achieve this goal. Our training programs provide the education and techniques to train aspiring lactation consultants. We adhere to the International Code of Marketing of Breast-milk Substitutes. The following are our guidelines for our social media sites Facebook page and groups, Twitter, blog comments, and other platforms, including comments on QBank and other lessons. Weve established these guidelines to ensure a positive experience for all community members. Keep it friendly and positive. We are here to support one another as we deepen our skills in supporting families. We are always happy to answer questions regarding our material. Please help us keep the space positive for all learners by directing concerns to an administrator. Stay focused on our core values. Our goal is to provide training programs that provide the education and techniques needed to support families as they achieve their breastfeeding goals. Please help us keep the conversation focused on LERs training offerings and your growth and development as a student. While we understand that many of our students are active in other issues, we ask that you not post on topics that may divide our community. For example, you are welcome to discuss the clinical impact that circumcision may have on lactation. Please refrain from commentary on the practice of circumcision. Please do not promote your business, sell items, or conduct business in our community. If you would like to promote an event and are unsure if it falls within our guidelines, please contact us at This email address is being protected from spambots. You need JavaScript enabled to view it.. Manage disagreements thoughtfully and respectfully. We value the conversations that will help us all learn more by engaging in healthy dissent. We are also working hard to maintain a safe space for learning. Please ensure that your comments respectfully articulate your disagreement with a persons ideas and do not attack the individual. We will protect our community as a safe space by deleting comments that are abusive or do not respect community members. Respect all members of our community. Comments that are racist, sexist, homophobic, or transphobic will not be tolerated. Similarly, comments that are not supportive of people of different abilities, sizes, or religions will also be deleted. No medical advice. Our site cannot provide medical advice online. While you may request general information on a topic (for example, Id like to learn more about supporting preterm infants) we ask that you do not seek advice or care plans for specific families. Please do not share the details of a familys health care or breastfeeding situation, even if you believe you have their permission to do so. Questions about how inclusive language will be used on the exam are welcome. To maintain a safe space for learning for all our students, questions about LERs inclusive language policy should be privately directed to the group administrator. Keep your personal information safe. We strongly discourage you from sharing personal information such as your phone, address, or e-mail address in public forums such as any social media platform we maintain. Ensure copyrights and personal information are protected. Please do not share photos, videos, or other information that is either copyrighted or for which you do not have permission. Well do our best to moderate quickly! Our forums and Facebook page are moderated by a staff member of LER. Well do our best to answer all questions within two business days. Sometimes there are delays because of training schedules. Please feel free to message LER privately atThis email address is being protected from spambots. You need JavaScript enabled to view it. if you have not heard back from us within one business day (our hours of operation are Mon-Fri 9am-5pm eastern). Our online groups are a benefit of LER participation. One of the benefits of being a student at LER is access to our Facebook and other groups, which are staffed by experts in the field. We ask that you honor that benefit by not inviting non-LER participants into the group or sharing the content you receive in those settings. If you know someone interested in being a part of the LER community, please let us know. Have a problem? Are you having a tech issue or do you need some sort of support from LER? The fastest way to get your issue resolved is by contacting us directly via e-mail at This email address is being protected from spambots. You need JavaScript enabled to view it.. This will get your issue in the right hands faster than posting in the Facebook group. Please bring your questions about our community policy to a moderator. If you have questions about this policy, please feel free to message us privately on Facebook or e-mail us here at This email address is being protected from spambots. You need JavaScript enabled to view it.. Please do not post publicly with questions about why your comment was deleted. If you are truly unsure, contact us and were happy to share with you our reasoning. 2631 Housley Road, Suite 1122, Annapolis, MD 21401 | Tel (443)-203-8553 | Fax (410)648-2570 | This email address is being protected from spambots. You need JavaScript enabled to view it. 2631 Housley Road, Suite 1122, Annapolis, MD 21401 | Tel (443)-203-8553 | Fax (410)648-2570 | This email address is being protected from spambots. You need JavaScript enabled to view it.

Ler violetas na janela. Ler o livro violetas na janela. Ler livro violetas na janela. Livro violetas na janela epub. Violetasna janela pdf.