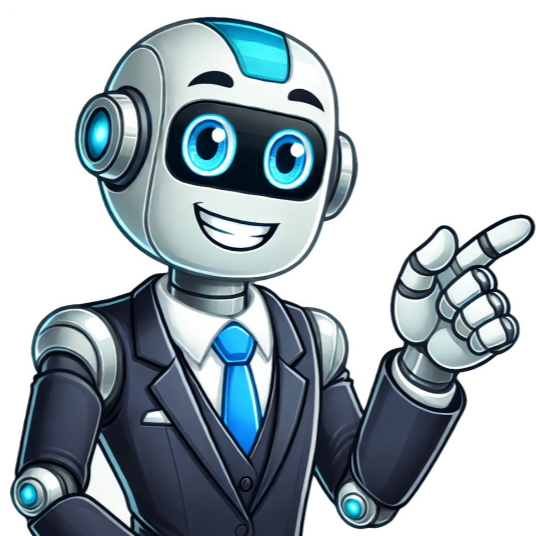


I'm not a robot



What are the directions, complete with additional "do it exactly this way" holding and prompting: drive around until you arrive at a large enough spot. Even to the front car, pull up. Stop. Turn your wheel all the way to the right while you're stopped. Turn around and take a look out the back of your car. Begin backing up. Here are the directions, complete with additional "do it exactly this way" holding and prompting: drive around until you arrive at a large enough spot. Even to the front car, pull up. Stop. Turn your wheel all the way to the right while you're stopped. Turn around and take a look out the back of your car. Begin backing up. Can you still pass in Texas if you fail parallel parking? Yes, absolutely. It's the second phase of the test. Your vehicle will be checked by the instructor, and you will be required to parallel park before going on the open road. You fail the parallel park right away if you fail. Is parallel parking a requirement for Texas drivers' licenses? As part of its examinations, Texas has a parallel parking test. You'll also have to drive in reverse for at least 50 yards at most. When taking the parallel parking test, remember to use your turn signals as well, or you risk failing. On the test, how much space do you get for parallel parking? It can be intimidating at first, but with a few helpful tips and a lot of practice, you can become a parallel parking pro. Drivers must park their vehicle between two uprights in a space that is 24 feet long and eight feet wide as part of the non-commercial driver's license road test. How do you pass the Texas parallel parking test? When you line your vehicle's back tire to the pole, parallel parking is relatively simple. The next step is to turn the wheel to the right, signal, roll back until the driver and pole are both across from each other, then turn the wheel to the left and roll until it is straight. Is it possible to practice parallel parking at DPS? Practice driving around the DPS Driver License Office, where you can take your test, on the roadways. This will make you feel more at ease and comfortable before the facility, you can also practice your parallel parking. What are the simpler ways to park parallel? Here are the directions, complete with additional "do it exactly this way" holding and prompting: drive around until you arrive at a large enough spot. Even to the front car, pull up. Stop. Turn your wheel all the way to the right while you're stopped. Turn around and take a look out the back of your car. Begin backing up. Here are the directions, complete with additional "do it exactly this way" holding and prompting: drive around until you arrive at a large enough spot. Even to the front car, pull up. Stop. Turn your wheel all the way to the right while you're stopped. Turn around and take a look out the back of your car. Begin backing up. Can you still pass in Texas if you fail parallel parking? Yes, absolutely. It's the second phase of the test. Your vehicle will be checked by the instructor, and you will be required to parallel park before going on the open road. You fail the parallel park right away if you fail. Is parallel parking a requirement for Texas drivers' licenses? As part of its examinations, Texas has a parallel parking test. You'll also have to drive in reverse for at least 50 yards at most. Take it easy on yourself. When taking the parallel parking test, remember to use your turn signals as well, or you'll fail. Is it possible to pass your driving test without having to park in parallel? Even if you lose points for failing to parallel park your car, you should still pass your test as long as you don't hit the car or the curb too hard. When you're parallel parking, do you turn on your blinker? Between your car and the other vehicle, leave about 2 to 3 feet (1 1/2 to 1 meter) of space. Turn on your blinker to let other drivers know you're parking in parallel. As you continue to reverse into the parking spot, slowly straighten out your wheel. Finally, once your car is parallel to the curb, stop reversing. How many times do you turn the wheel to park in parallel? Put your car in DRIVE, turn the steering wheel 1.5 turns or until all of your wheels are straight, then move forward slowly until you're about 3 feet from the car in front of you, verifying that your wheels are straight. Place your vehicle in park. THAT'S IT! You should be less than 12 inches from the curb if done correctly. Is it possible to practice parallel parking at the DMV? It can be intimidating at first, but with a few helpful tips and a lot of practice, you can become a parallel parking pro. Drivers must park their vehicle between two uprights in a space that is 24 feet long and eight feet wide as part of the non-commercial driver's license road test. Is it possible to pass your driver's license without having to park in parallel? Touching the curb is fine, but don't roll over it. Even if you lose points for failing to parallel park your car, you should still pass your test as long as you don't hit the car or the curb too hard. Is it best to leave the curb when parking parallel? Your curb side wheels must not be more than 18 inches from the curb when parallel parked. Dim your lights when you get within _____ feet of a vehicle traveling in your direction while driving at night with high beams. How early can you register for Texas DPS online? His phone number was called just two minutes after his scheduled time of 2:08. The lesson learned is simple: the get-in-line online system works, but you must log in and attempt to get in line online as soon as possible. Monday through Friday, at 7 a.m., you can try to get in the system as soon as possible. What is the definition of a Texas driver's license? Making proper turns, such as a U-turn and a three-point turn. Backing up. Speeding, road signs, and traffic signals are all required. Turn signals and mirrors should be used correctly. What is the Texas driving test's passing score? In each section, you'll be scored, with the highest possible score of 25 per area for a total score of 100. To pass the Texas driving test, you must have a minimum score of 70. How long will the Texas driving test be? The 20-minute test covers a variety of basic driving skills. Here's a breakdown of what to expect. A vehicle assessment is the first step in the exam. You'll have to demonstrate that the vehicle you're driving has a variety of safety features, such as two license plates, a working horn, and safety belts. What happens in Texas if you fail your CDL test three times? Each test requires three attempts. You must pay another \$11 and retake BOTH tests if you fail EITHER one three times. How do you design a park that is perpendicular to the ground? Use your turn signal to park perpendicular. Continue slowly. Begin turning to align your vehicle with the center of the parking space when the side mirror is even with the first line. When you're fully in the parking spot, move forward slowly and come to a halt. Parking Perpendicular. Download Article Download Article The Texas driving test is administered by the Texas Department of Public Safety (DPS). If you want a driver's license and you live in Texas, you'll need to first pass this test. It's very common to feel anxious when taking this test, but have no fear. You only need to complete of some preliminary requirements, take the test, and make use of techniques to overcome driving test anxiety. 1 Arrive to your appointment early. You never know when traffic or some other unpleasant surprise might cause you to be late. Additionally, feeling rushed to get to your test on time can make you even more anxious. A moment to calm yourself could significantly improve your test results.[1] When you arrive early, you'll have extra time to do things that relax you, like listening to music, reading a book, drinking a cup of coffee, and so on. 2 Present the necessary documents to the testing agent. In addition to your license, inspection, and registration, you'll also have to present a valid form of state issued ID. After these documents have been verified by the agent, your vehicle assessment will begin. Valid forms of primary ID include: state driver's license or ID card not yet expired two years, valid passport, permanent resident card, temporary resident card, unexpired military IDs, and more. The vehicle assessment portion of the test will only involve your testing agent checking that your vehicle is safe and legal. You likely won't be asked questions at this point unless something is wrong. Advertisement 3 Ask questions before starting the driving test. Different testing locations may have a different setup, and you may want to inquire with your testing agent about the course or the agent's expectations. However, once you begin the driving test, the agent is generally not permitted to carry on casual conversation. 4 Make car adjustments before starting the car. Right when you hop in the car, your testing agent will be watching to see if you perform your pre-start duties. These involve adjusting the mirrors, your seat, fastening your seatbelt, and knowing the car controls.[2] Even if your car is already adjusted to your comfort, make small adjustments to show that you have good driving habits. Some testing agents can be very strict about the order of the test. Check with your testing agent before getting into your car, making adjustments, and turning it on. 5 Demonstrate your ability in the four main skill areas. Your testing agent will evaluate your driving test with regard to control, observation, positioning, and signaling. Failing to do these legally and safely will result in points, and too many points result in failing the test. Control relates to how well you are able to make the car do what you intend. For example, putting the car in reverse when you meant to put it in drive or struggling to turn cleanly would indicate poor control. A good score in observation will come from you always keeping traffic in view and responding to potential problems proactively. Your positioning score will depend on your ability to stay in your lane consistently. Drifting, weaving, or favoring one side of the lane over another will hurt this score. As long as you always remember to use your turn signals where appropriate, you can expect a strong score in this skill area.[3] 6 Prove your basic driving proficiency. This includes many things, all of which should have been covered in your driver's education course. The exact areas you are tested on can vary, though there are some features you can expect on nearly any driving test. These include: Parallel parking Backing up your vehicle for 15 feet in a straight line Defensive driving Obeying all traffic signs and signals, especially stop signs Stopping quickly from a speed of 20 mph without skidding the tires Keeping proper posture, with both hands on the wheel at all times[4] 7 Receive your results. After your test is finished, the testing agent will inform you whether or not you passed the test. Following this, you can expect detailed feedback on your driving strengths and weaknesses. If you didn't pass this time around, you still have 90 days to try two more times to pass the test. If 90 days have passed since your last driving test, or if you've failed the test three times in 90 days, you'll have to file a new application and pay the application fee once again. Advertisement 1 Make a practice test. With a few cones or other place markers, like boxes, you can create your own practice driving test in your driveway, yard, or in an empty parking lot. You should especially target trouble areas for practice, like parallel parking. To create a test spot for parallel parking, set two cones or markers 25 feet apart from each other and 8 feet from the curb. When you park your car, you'll want your wheels to end up 6-18 inches from the curb. 2 Coach yourself through anxiety. Nerves from your driving test might make you overly critical of your ability and hurt your performance. When you feel anxiety, confront it directly and mentally encourage yourself. For example, you might say something like: "It's only natural to be nervous. Lots of people get nervous about tests. I've worked hard and am a careful driver. I can do this!" "I don't usually feel nervous when driving. I'm going to do my best, and if I need to, I can always take it again."[5] 3 Take your time. As long as you are performing your driving maneuvers safely and legally, you don't need to rush to make a turn, merge into a lane, or pull into a parking spot. Similarly, take your time answering any oral questions during the driving test. It's better to take your time and do things properly than rush and get a worse score.[6] 4 Remember to breathe. When you get nervous or anxious, without realizing it you might end up holding your breath or breathing shallowly. This can make you feel worse. Take deep, full breaths slowly to help calm yourself during the test. Stress related shallow breathing can cause panic attacks in some people. Stop panic attacks before they start by regulating your breathing with deep, full breaths. Breathing in and out on a count can also help you calm yourself. For example, you might breathe in slowly and completely while counting to ten, hold the breath for a moment, then breathe out slowly and completely, again while counting to ten. Advertisement 1 Complete a course in driver's education. If you are under 25 years old, you'll have to complete a driver's education course before you can even take the driving test. You can begin the course as young as 14, but you won't be able to apply for your learner's permit until you are at least 15. If you are over 18 and have a valid license, or if you have a valid license from another state, you won't be required to take a driving portion of the test, though it could be requested by DPS. Those under 18, however, are required to take the test, even with a valid license. There are a few different options available for your driver's training. You could learn at a for-profit driving school, a public school driving program, or a parent taught version. too.[7] 2 Fulfill your practice hours. After completing your classroom hours and passing the written exam for your learner's permit, you'll need to put in some practice time. Before your driving test, you'll need to have had your permit for at least six months, practiced at least 30 hours behind the wheel, and turned 16 years old. When you take and pass the test, you get your provisional license. Provisional licenses are generally for young drivers over the age of 16 but under 18. These licenses have some restrictions until you turn 18, when you will be issued your official license.[8] Driving examiners look for smooth, consistent skills that demonstrate safety in different settings. Just like learning a new sport or an instrument, it takes a lot of time on task to be proficient in driving. 3 Schedule your appointment. Since driving tests are administered by DPS, you'll have to make an appointment at your local DPS office. In most cases, this can be done on the official Texas DPS homepage under the "More Online Services" tab. Choose a time of day that you're alert and at your best. For example, if you're a morning person, you might want to schedule your appointment earlier in the day. You may want to avoid scheduling your test for rush hour or lunch time. Increased traffic can add unnecessary stress to your test. 4 Assess your vehicle before the test. Before you begin the test, the testing agent will check that your car is safe and legal to drive. Failing any one part of the vehicle assessment could result in you failing the test, even if your driving is perfect. Be sure your car has: Two license plates permanently attached to the front and back of the car, excluding out-of-state and temporary plates. A working speedometer, horn, front and back turn signals, seatbelts, wipers, headlights, brake lights, and taillights. A minimum of one review mirror, either inside or outside the vehicle, and a front passenger door that opens normally both inside and outside. Current registration, inspection, and insurance. Be careful where insurance is concerned. You cannot be listed as an "excluded driver." Advertisement 5 Answer New Question Question How can a beginner get better at driving? Jacqueline Regev Driving Instructor Jacqueline Regev is a Driving Instructor and the Founder & CEO of Bubble of Safety Driving School. With over 20 years of education experience, she specializes in encouraging people to develop their skills to become safe and courteous drivers. Jacqueline earned a Bachelor's Degree from UCLA and an MA from Chapman University. She is also pursuing a PhD from UC Santa Barbara. As a new driver, choose a location without unexpected hazards such as children playing in the street, like an industrial area on the weekends. The next step would be driving safely in a neighborhood setting. When you're finally confident in controlling the vehicle, try driving on two lane streets with higher speeds. Question What should I use my blinker for when parallel parking? You turn the blinker on as you pull up to the spot to begin parking and leave it on until you've fully maneuvered into the space. When you are ready to leave the spot, you turn the blinker on immediately to indicate you will be pulling out. Question Can I drive a standard for the driving test? Yes, absolutely. See more answers Ask a Question Advertisement Thanks Advertisement This article was co-authored by Jacqueline Regev. Jacqueline Regev is a Driving Instructor and the Founder & CEO of Bubble of Safety Driving School. With over 20 years of education experience, she specializes in encouraging people to develop their skills to become safe and courteous drivers. Jacqueline earned a Bachelor's Degree from UCLA and an MA from Chapman University. She is also pursuing a PhD from UC Santa Barbara. This article has been viewed 468,741 times. Co-authors: 17 Updated: March 10, 2025 Views: 468,741 Categories: Learning to Drive Print Send fan mail to authors Thanks to all authors for creating a page that has been read 468,741 times. "It gave me some good pointers. Though I didn't pass the first one, I'll change a few things for next time. My biggest problem is that I drive standard shift, and it's kind of hard to keep two hands on the wheel at all times. That's what killed my score."... more Share your story Share -- copy and redistribute the material in any medium or format for any purpose, even commercially. Adapt -- remix, transform, and build upon the material for any purpose, even commercially. The licensor cannot revoke these freedoms as long as you follow the license terms. Attribution -- You must give appropriate credit, provide a link to the license, and indicate if changes were made. You may do so in any reasonable manner, but not in any way that suggests the licensor endorses you or your use. ShareAlike -- If you remix, transform, or build upon the material, you must distribute your contributions under the same license as the original. No additional restrictions -- You may not apply legal terms or technological measures that legally restrict others from doing anything the license permits. You do not have to comply with the license for elements of the material in the public domain or where your use is permitted by an applicable exception or limitation. No warranties are given. The license may not give you all of the permissions necessary for your intended use. For example, other rights such as publicity, privacy, or moral rights may limit how you use the material. In Texas, parking spots that measure at least 9 feet wide typically require parallel parking. When parallel parking in Texas, drivers should ensure proper clearance by slowly reversing their vehicle into the space until their vehicle is parallel to the curb. When the front and rear bumpers are aligned with those of the vehicle ahead, they should move the wheel all the way to the right and straighten out, adjusting the vehicle as needed until it is completely clear of the curb and the space ahead. Drivers should also ensure there is ample clearance between themselves and the vehicles in front and behind. The most important step when it comes to parallel parking in Texas is to turn your wheels sharply to the right before you begin backing into the parking space. This helps ensure that you are lined up correctly and that your car will fit completely within the designated space. In Texas, drivers can know they are properly parallel parked when the vehicle's front and rear bumpers are no more than one foot away from the car parked in front of and behind it respectively, and the vehicle is within six inches of the curb. When maneuvering into a parallel parking spot in Texas, it is important to take your time and be cautious. Start by slowly pulling up alongside the vehicle in front of the parking spot. Make sure to leave enough space between your car and the other vehicle for you to pull forward. Turn your wheel all the way to the right, and begin to pull forward. As you are pulling forward, straighten out your wheel so that it is parallel with the curb. When you have moved just past the parking spot, turn your wheel all the way to the left and back in slowly until you are parallel with the curb. Then, adjust your wheels so they are straight with the curb. The recommended distance between cars when backing out of a parallel parking spot in Texas is at least five feet. Drivers should keep in mind that they must stay at least one foot away from the car in front of them and the car behind them when parallel parking in Texas. Additionally, it's important that drivers make sure their car is straight and not blocking any part of the roadway or sidewalk. Finally, drivers must ensure that their car is completely within the parking space so as not to encroach on another's spot. The best way to quickly and safely exit a parallel parking spot in Texas is to first check for any traffic behind you and signal right before reversing your car. Then, turn your wheel sharply to the right and slowly reverse your car until it is aligned with the center of the roadway. Once you have reached the center of the roadway, check for traffic again, signal left, and then turn your wheel sharply to the left to complete the maneuver. To maximize their chances of success when attempting to parallel park in Texas, drivers should be sure to double check their surroundings before maneuvering in and out of the parking spot; this includes checking for traffic, pedestrians, and other vehicles. Additionally, drivers should take their time to properly measure the distance between the parked vehicles and their own and then adjust the wheel as needed to fit in the space. It can be helpful to practice in an empty parking lot or other space before attempting parallel parking on the street. Finally, drivers should always obey all traffic laws and signals in Texas while parallel parking. If a driver is unable to complete the parallel parking maneuver in Texas, they should pull forward and try to park again. If they are still unable to park correctly, they should find an alternate parking space. Drivers can ensure that their car is properly straightened up after completing the parallel parking maneuver in Texas by aligning the front and back bumpers of their car with the curb. Additionally, drivers should also check to make sure that the car is within 18 inches of the curb, and that all four wheels are completely within the parking space. Drivers should assess the space available to park within 18 inches of the curb. This ensures that your vehicle is not sticking out into the roadway, impeding traffic or posing a hazard to other drivers. According to the Texas Department of Public Safety, if your vehicle is more than 18 inches away from the curb, you could be subject to a fine. Leaving Room to Exit the Parking Space While it's important to focus on getting your vehicle into the parallel parking spot, it's equally important to leave enough room to exit the space safely. This means ensuring that there is enough space between your vehicle and the vehicles in front and behind you, allowing you to pull out of the spot without any issues. It's worth noting that the space requirements for parallel parking may vary depending on the specific city or municipality within Texas. Therefore, it's always a good idea to familiarize yourself with the local regulations and guidelines to ensure compliance. For more detailed information on parallel parking laws and regulations in Texas, you can visit the official website of the Texas Department of Public Safety. Tips for Proper Parallel Parking Parallel parking can be a challenging task for many drivers, but with the right technique and practice, it can be mastered. Here are some valuable tips to help you parallel park like a pro: Check Behind Before Backing Up Before attempting to parallel park, it's crucial to check your mirrors and blind spots to ensure there are no vehicles or pedestrians behind you. This step is essential for your safety as well as the safety of others on the road. Take a moment to assess the space and make sure there is enough room for your vehicle. Use Signals and Mirrors When you are ready to begin the parallel parking maneuver, make use of your turn signals to indicate your intentions to other drivers. This will give them an idea of what you are about to do and allow them to adjust their driving accordingly. Additionally, be sure to use your mirrors effectively throughout the process to have a clear view of your surroundings and any potential obstacles. Straighten Out Once Parked Once you have successfully maneuvered your vehicle into the parallel parking space, it's important to straighten out your wheels to ensure that you are parked properly. Align your wheels parallel to the curb to avoid any potential issues or citations. Taking this extra step will not only make it easier for you to exit the parking space later but will also prevent any inconvenience to other drivers. Remember, practice makes perfect when it comes to parallel parking. Don't be discouraged if you struggle at first. With time and experience, you will become more confident and skilled at parallel parking. Avoiding Parallel Parking Violations Parallel parking can be a challenging task for many drivers, but it is a necessary skill to master, especially in urban areas with limited parking options. To ensure smooth traffic flow and prevent accidents, there are specific laws and regulations in place regarding parallel parking. By understanding and following these rules, you can avoid potential violations and fines. Not Parking Within 12 Inches of Curb One common violation when parallel parking is not parking close enough to the curb. In Texas, it is required to park within 12 inches of the curb. This ensures that your vehicle does not obstruct the flow of traffic and allows enough space for other vehicles to pass by safely. Parking too far from the curb can also make it difficult for pedestrians to navigate the sidewalk. Blocking Traffic Another violation to avoid is blocking traffic while parallel parking. It is essential to park efficiently and quickly without obstructing the movement of other vehicles. Blocking traffic not only causes inconvenience to other drivers but can also lead to traffic congestion and potential accidents. Take your time to assess the available space and maneuver your vehicle skillfully to avoid blocking the flow of traffic. Parking Too Far From Curb Parking too far from the curb is not only visually unappealing but also poses a safety risk. When parking parallel to the curb, it is important to align your vehicle as close to the curb as possible. Parking too far from the curb can create a hazard for passing vehicles and may result in scratches or damage to your vehicle as well. When parallel parking, always be mindful of the laws and regulations specific to your area. These rules are in place to ensure the safety and convenience of all road users. If you are unsure about the parallel parking requirements in your area, it is advisable to consult the official website of your local Department of Motor Vehicles (DMV) or the Texas Department of Transportation (TxDOT) for accurate and up-to-date information. Parallel Parking Training Tips and Tricks Practicing Space Awareness Parallel parking can be a daunting task for many drivers, but with the right training and practice, it can become easier and more manageable. One important tip is to develop space awareness. This means being able to accurately judge the available space and your vehicle's dimensions. To improve your space awareness, find an empty parking lot or wide street where you can set up makeshift parking spaces using cones or other markers. Start by practicing with larger spaces and gradually decrease the size of the spaces as you become more comfortable. This will help you develop a sense of spatial awareness and improve your ability to park in tighter spots. Remember to always use your mirrors and check blind spots to ensure you have enough space to park safely. It's better to take a little extra time to find a larger space than risk damaging your vehicle or causing an obstruction. Perfecting Your Timing Timing is crucial when parallel parking, especially in busy urban areas where other drivers may be waiting for you to finish. One helpful trick is to approach the parking spot at a slow, controlled speed. This will give you more control over your vehicle and allow you to make adjustments as needed. As you approach the parking spot, use your turn signal to indicate your intention to park. Begin turning the steering wheel as you pass the front bumper of the vehicle in front of the spot. This technique, known as the "two-move method," can help you position your vehicle correctly without the need for excessive back-and-forth adjustments. Practice your timing by setting up different parking scenarios and timing yourself as you maneuver into the spot. This will help you develop a sense of how much time you need to complete the parking maneuver and allow you to become more efficient with practice. Mastering Mirror Usage Your mirrors are essential tools for parallel parking. Proper mirror usage can help you assess the space available, spot potential obstacles, and adjust your position as necessary. It's important to use all of your mirrors effectively to ensure a safe and successful parking maneuver. Start by adjusting your side mirrors to provide a clear view of the area alongside your vehicle. This will help you gauge the distance between your vehicle and the cars parked on either side. As you approach the parking spot, use your mirrors to monitor the position of your vehicle and make any necessary adjustments. Remember to also check your rearview mirror to keep an eye on the traffic behind you. This will help you maintain awareness of your surroundings and avoid any potential collisions or disruptions to the flow of traffic. By practicing these tips and tricks, you can improve your parallel parking skills and feel more confident on the road. Remember to always follow local laws and regulations, and never rush the parking process. With time and practice, you'll become a parallel parking pro! Conclusion While Texas does not mandate a specific distance for parallel parking, using a full car length as a guide, leaving curb room, and avoiding traffic impedance will set you up for proper, legal parking. With practice, parallel parking can become second nature. Download Article Download Article The Texas driving test is administered by the Texas Department of Public Safety (DPS). If you want a driver's license and you live in Texas, you'll need to first pass this test. It's very common to feel anxious when taking this test, but have no fear. You only need to complete of some preliminary requirements, take the test, and make use of techniques to overcome driving test anxiety. 1 Arrive to your appointment early. You never know when traffic or some other unpleasant surprise might cause you to be late. Additionally, feeling rushed to get to your test on time can make you even more anxious. A moment to calm yourself could significantly improve your test results.[1] When you arrive early, you'll have extra time to do things that relax you, like listening to music, reading a book, drinking a cup of coffee, and so on. 2 Present the necessary documents to the testing agent. In addition to your license, inspection, and registration, you'll also have to present a valid form of state issued ID. After these documents have been verified by the agent, your vehicle assessment will begin. Valid forms of primary ID include: state driver's license or ID card not yet expired two years, valid passport, permanent resident card, temporary resident card, unexpired military IDs, and more. The vehicle assessment portion of the test will only involve your testing agent checking that your vehicle is safe and legal. You likely won't be asked questions at this point unless something is wrong. Advertisement 3 Ask questions before starting the driving test. Different testing locations may have a different setup, and you may want to inquire with your testing agent about the course or the agent's expectations. However, once you begin the driving test, the agent is generally not permitted to carry on casual conversation. 4 Make car adjustments before starting the car. Right when you hop in the car, your testing agent will be watching to see if you perform your pre-start duties. These involve adjusting the mirrors, your seat, fastening your seatbelt, and knowing the car controls.[2] Even if your car is already adjusted to your comfort, make small adjustments to show that you have good driving habits. Some testing agents can be very strict about the order of the test. Check with your testing agent before getting into your car, making adjustments, and turning it on. 5 Demonstrate your ability in the four main skill areas. Your testing agent will evaluate your driving test with regard to control, observation, positioning, and signaling. Failing to do these legally and safely will result in points, and too many points result in failing the test. Control relates to how well you are able to make the car do what you intend. For example, putting the car in reverse when you meant to put it in drive or struggling to turn cleanly would indicate poor control. A good score in observation will come from you always keeping traffic in view and responding to potential problems proactively. Your positioning score will depend on your ability to stay in your lane consistently. Drifting, weaving, or favoring one side of the lane over another will hurt this score. As long as you always remember to use your turn signals where appropriate, you can expect a strong score in this skill area.[3] 6 Prove your basic driving proficiency. This includes many things, all of which should have been covered in your driver's education course. The exact areas you are tested on can vary, though there are some features you can expect on nearly any driving test. These include: Parallel parking Backing up your vehicle for 15 feet in a straight line Defensive driving Obeying all traffic signs and signals, especially stop signs Stopping quickly from a speed of 20 mph without skidding the tires Keeping proper posture, with both hands on the wheel at all times[4] 7 Receive your results. After your test is finished, the testing agent will inform you whether or not you passed the test. Following this, you can expect detailed feedback on your driving strengths and weaknesses. If you didn't pass this time around, you still have 90 days to try two more times to pass the test. If 90 days have passed since your last driving test, or if you've failed the test three times in 90 days, you'll have to file a new application and pay the application fee once again. Advertisement 1 Make a practice test. With a few cones or other place markers, like boxes, you can create your own practice driving test in your driveway, yard, or in an empty parking lot. You should especially target trouble areas for practice, like parallel parking. To create a test spot for parallel parking, set two cones or markers 25 feet apart from each other and 8 feet from the curb. When you park your car, you'll want your wheels to end up 6-18 inches from the curb. 2 Coach yourself through anxiety. Nerves from your driving test might make you overly critical of your ability and hurt your performance. When you feel anxiety, confront it directly and mentally encourage yourself. For example, you might say something like: "It's only natural to be nervous. Lots of people get nervous about tests. I've worked hard and am a careful driver. I can do this!" "I don't usually feel nervous when driving. I'm going to do my best, and if I need to, I can always take it again."[5] 3 Take your time. As long as you are performing your driving maneuvers safely and legally, you don't need to rush to make a turn, merge into a lane, or pull into a parking spot. Similarly, take your time answering any oral questions during the driving test. It's better to take your time and do things properly than rush and get a worse score.[6] 4 Remember to breathe. When you get nervous or anxious, without realizing it you might end up holding your breath or breathing shallowly. This can make you feel worse. Take deep, full breaths slowly to help calm yourself during the test. Stress related shallow breathing can cause panic attacks in some people. Stop panic attacks before they start by regulating your breathing with deep, full breaths. Breathing in and out on a count can also help you calm yourself. For example, you might breathe in slowly and completely while counting to ten, hold the breath for a moment, then breathe out slowly and completely, again while counting to ten. Advertisement 1 Complete a course in driver's education. If you are under 25 years old, you'll have to complete a driver's education course before you can even take the driving test. You can begin the course as young as 14, but you won't be able to apply for your learner's permit until you are at least 15. If you are over 18 and have a valid license, or if you have a valid license from another state, you won't be required to take a driving portion of the test, though it could be requested by DPS. Those under 18, however, are required to take the test, even with a valid license. There are a few different options available for your driver's training. You could learn at a for-profit driving school, a public school driving program, or a parent taught version. too.[7] 2 Fulfill your practice hours. After completing your classroom hours and passing the written exam for your learner's permit, you'll need to put in some practice time. Before your driving test, you'll need to have had your permit for at least six months, practiced at least 30 hours behind the wheel, and turned 16 years old. When you take and pass the test, you get your provisional license. Provisional licenses are generally for young drivers over the age of 16 but under 18. These licenses have some restrictions until you turn 18, when you will be issued your official license.[8] Driving examiners look for smooth, consistent skills that demonstrate safety in different settings. Just like learning a new sport or an instrument, it takes a lot of time on task to be proficient in driving. 3 Schedule your appointment. Since driving tests are administered by DPS, you'll have to make an appointment at your local DPS office. In most cases, this can be done on the official Texas DPS homepage under the "More Online Services" tab. Choose a time of day that you're alert and at your best. For example, if you're a morning person, you might want to schedule your appointment earlier in the day. You may want to avoid scheduling your test for rush hour or lunch time. Increased traffic can add unnecessary stress to your test. 4 Assess your vehicle before the test. Before you begin the test, the testing agent will check that your car is safe and legal to drive. Failing any one part of the vehicle assessment could result in you failing the test, even if your driving is perfect. Be sure your car has: Two license plates permanently attached to the front and back of the car, excluding out-of-state and temporary plates. A working speedometer, horn, front and back turn signals, seatbelts, wipers, headlights, brake lights, and taillights. A minimum of one review mirror, either inside or outside the vehicle, and a front passenger door that opens normally both inside and outside. Current registration, inspection, and insurance. Be careful where insurance is concerned. You cannot be listed as an "excluded driver." Advertisement 5 Answer New Question Question How can a beginner get better at driving? Jacqueline Regev Driving Instructor Jacqueline Regev is a Driving Instructor and the Founder & CEO of Bubble of Safety Driving School. With over 20 years of education experience, she specializes in encouraging people to develop their skills to become safe and courteous drivers. Jacqueline earned a Bachelor's Degree from UCLA and an MA from Chapman University. She is also pursuing a PhD from UC Santa Barbara. As a new driver, choose a location without unexpected hazards such as children playing in the street, like an industrial area on the weekends. The next step would be driving safely in a neighborhood setting. When you're finally confident in controlling the vehicle, try driving on two lane streets with higher speeds. Question What should I use my blinker for when parallel parking? You turn the blinker on as you pull up to the spot to begin parking and leave it on until you've fully maneuvered into the space. When you are ready to leave the spot, you turn the blinker on immediately to indicate you will be pulling out. Question Can I drive a standard for the driving test? Yes, absolutely. See more answers Ask a Question Advertisement Thanks Advertisement This article was co-authored by Jacqueline Regev. Jacqueline Regev is a Driving Instructor and the Founder & CEO of Bubble of Safety Driving School. With over 20 years of education experience, she specializes in encouraging people to develop their skills to become safe and courteous drivers. Jacqueline earned a Bachelor's Degree from UCLA and an MA from Chapman University. She is also pursuing a PhD from UC Santa Barbara. This article has been viewed 468,741 times. Co-authors: 17 Updated: March 10, 2025 Views: 468,741 Categories: Learning to Drive Print Send fan mail to authors Thanks to all authors for creating a page that has been read 468,741 times. "It gave me some good pointers. Though I didn't pass the first one, I'll change a few things for next time. My biggest problem is that I drive standard shift, and it's kind of hard to keep two hands on the wheel at all times. That's what killed my score."... more Share your story